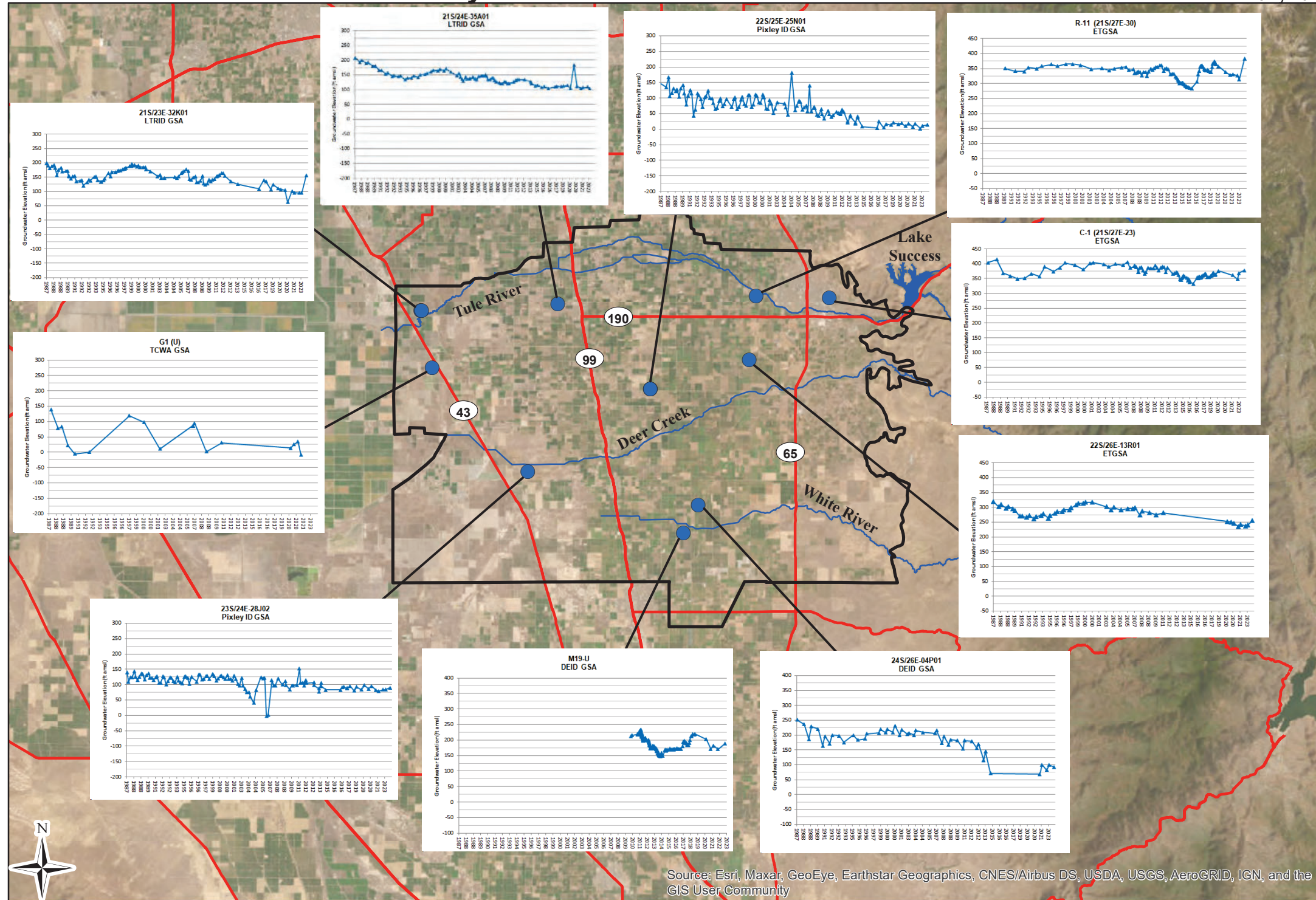


Figure 2-18A

Tule Subbasin Technical Advisory Committee

July 2024

Chapter 2
Basin Setting



Map Features

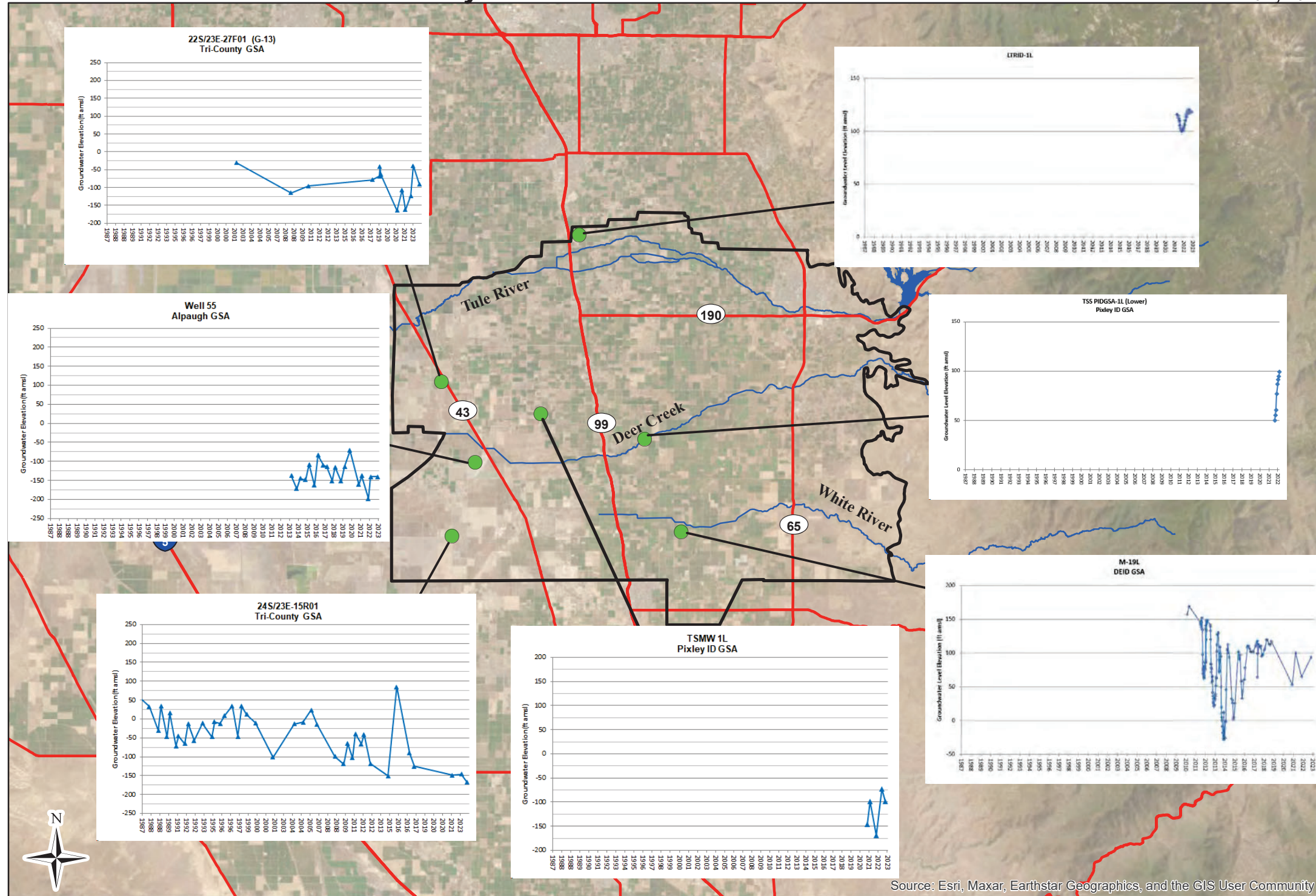
- Hydrograph Well
- Major Hydrologic Feature
- Subbasin Boundary
- State Highway/Major Road

Figure 2-19A

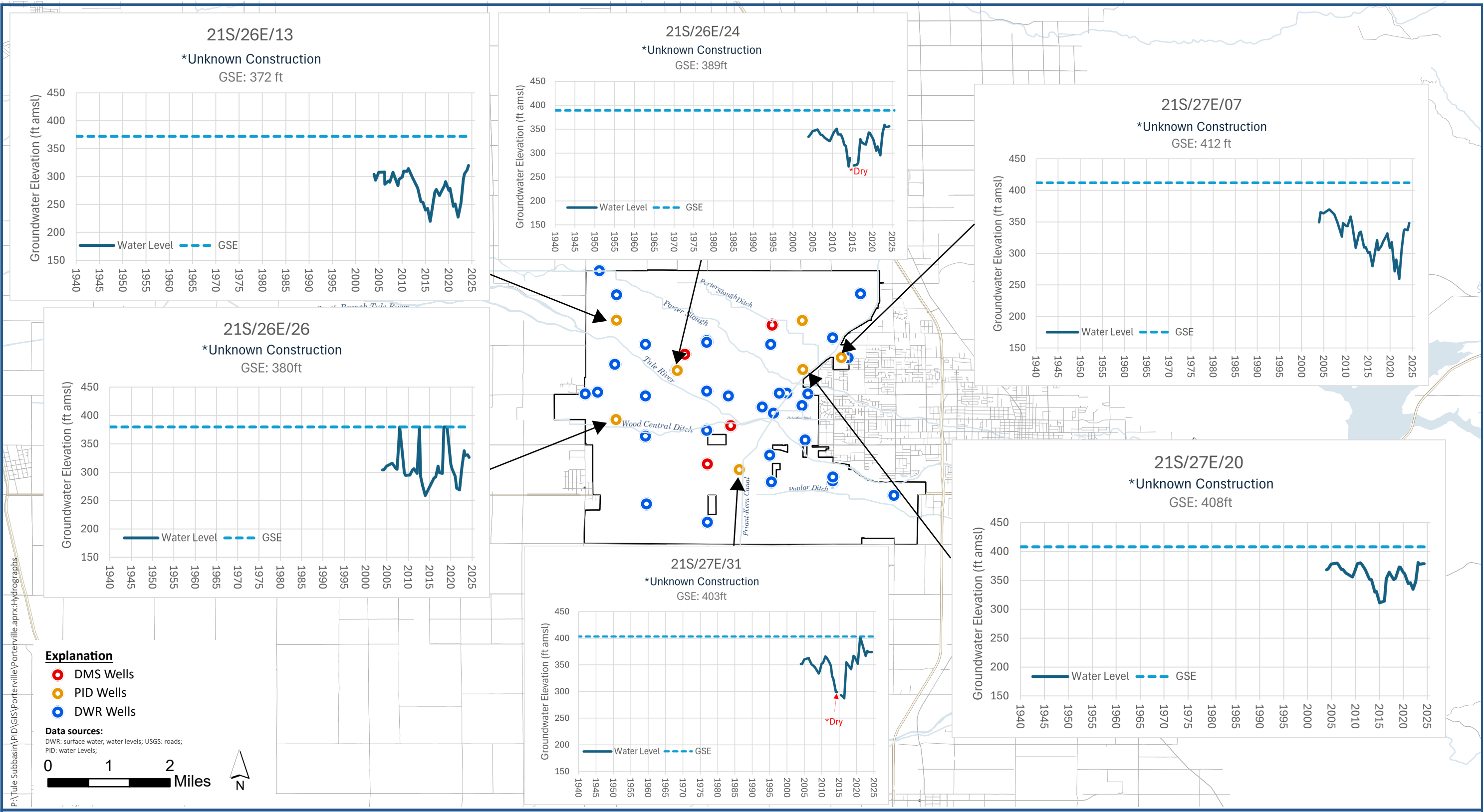
Tule Subbasin Technical Advisory Committee

July 2024

Chapter 2
Basin Setting



DRAFT-FINAL
Lower Aquifer Groundwater
Level Hydrographs
Figure 2-27



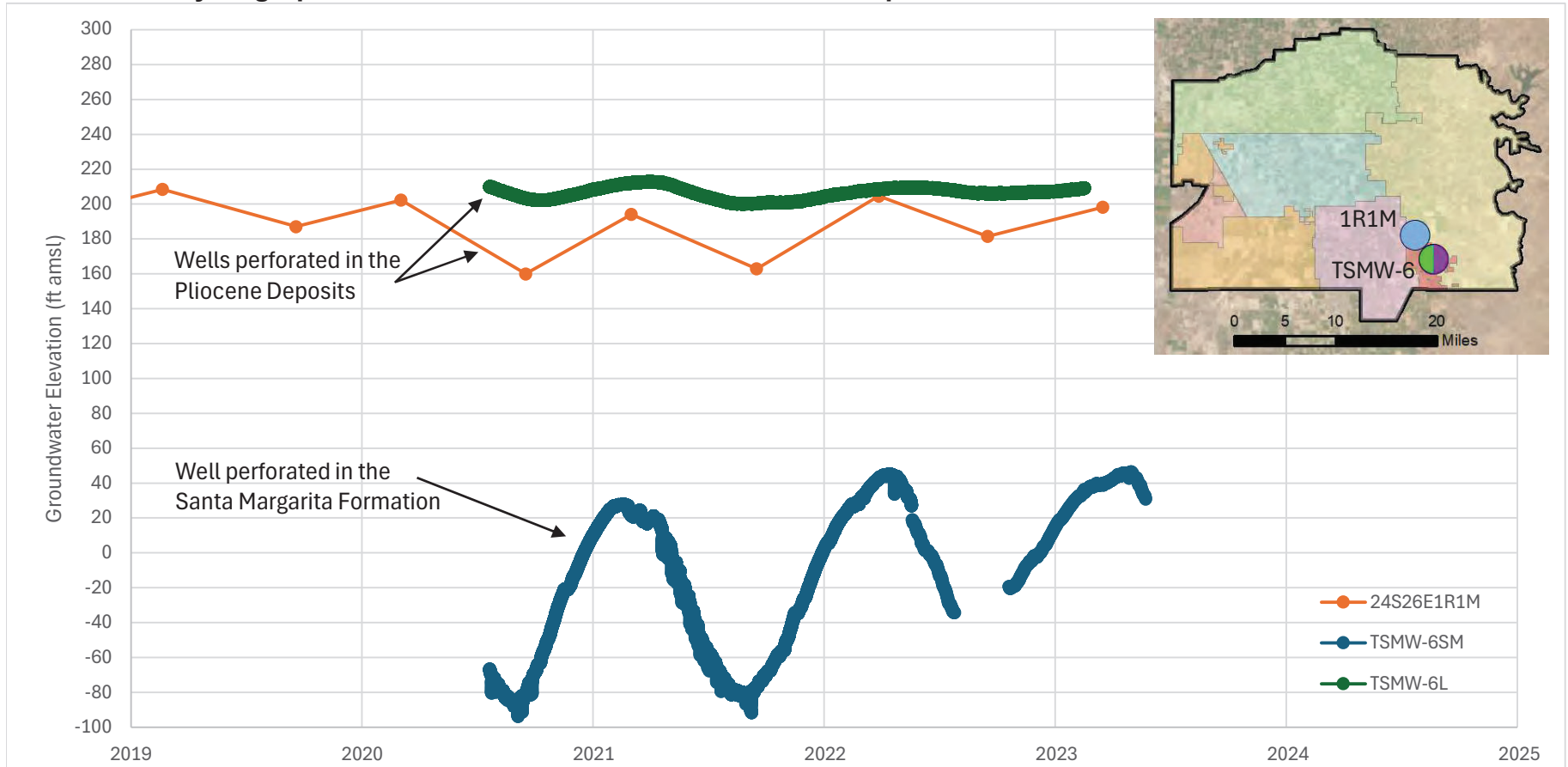
PID Hydrographs (Local Dataset)

Groundwater Sustainability Plan
 Porterville Irrigation District GSA, Tule Subbasin

Figure 2-19

Figure 2-19C

Hydrographs for Wells Constructed in the Pliocene Deposits – Kern-Tulare Water District GSA



Notes:

ft amsl = feet above mean sea level

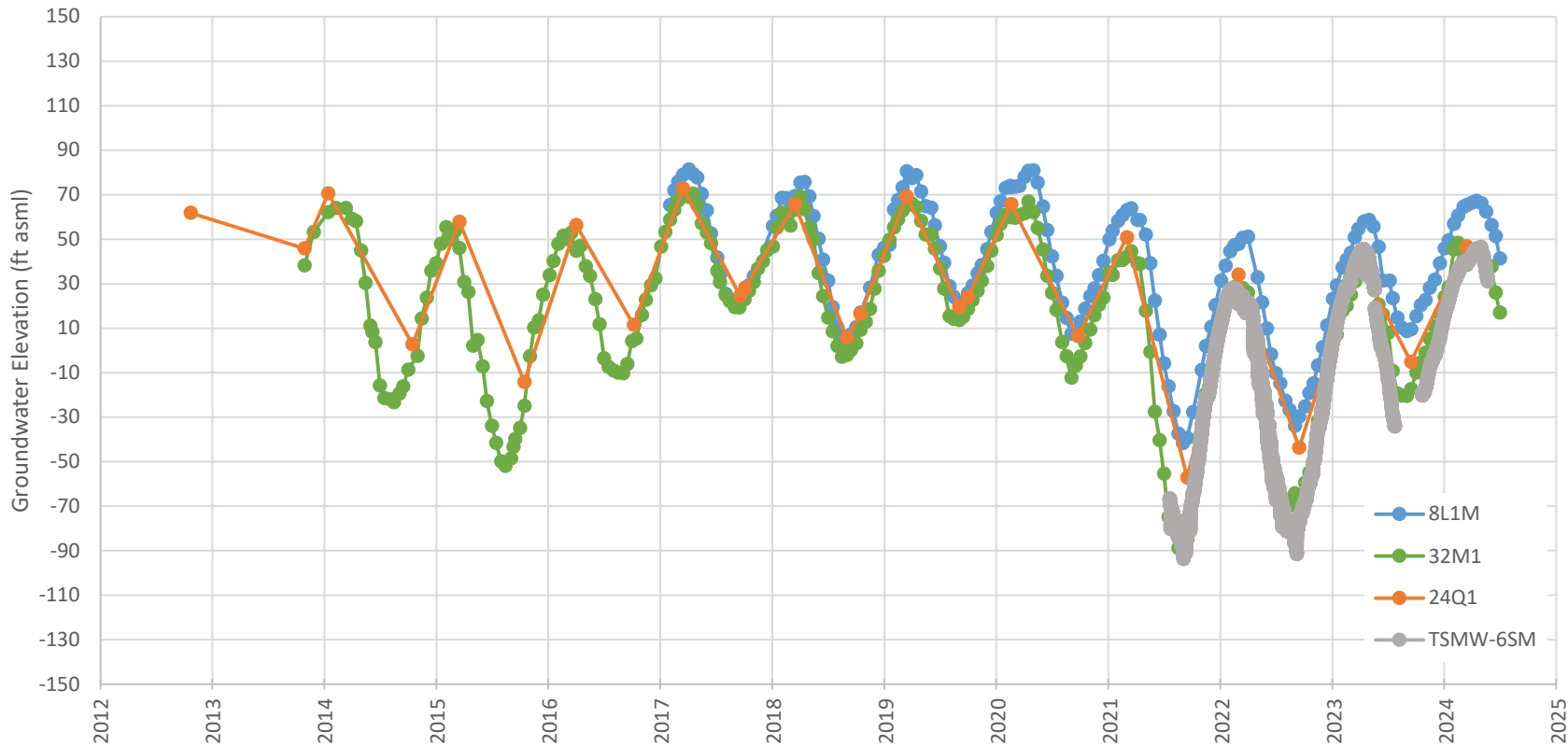
Reference Point Elevation: 1R1M = 268.3 ft amsl

TSMW-6SM = 516.6 ft amsl

TSMW-6L = 519.3 ft amsl

Figure 2-19D

Santa Margarita Well Hydrographs in
Kern-Tulare Water District GSA



Notes:

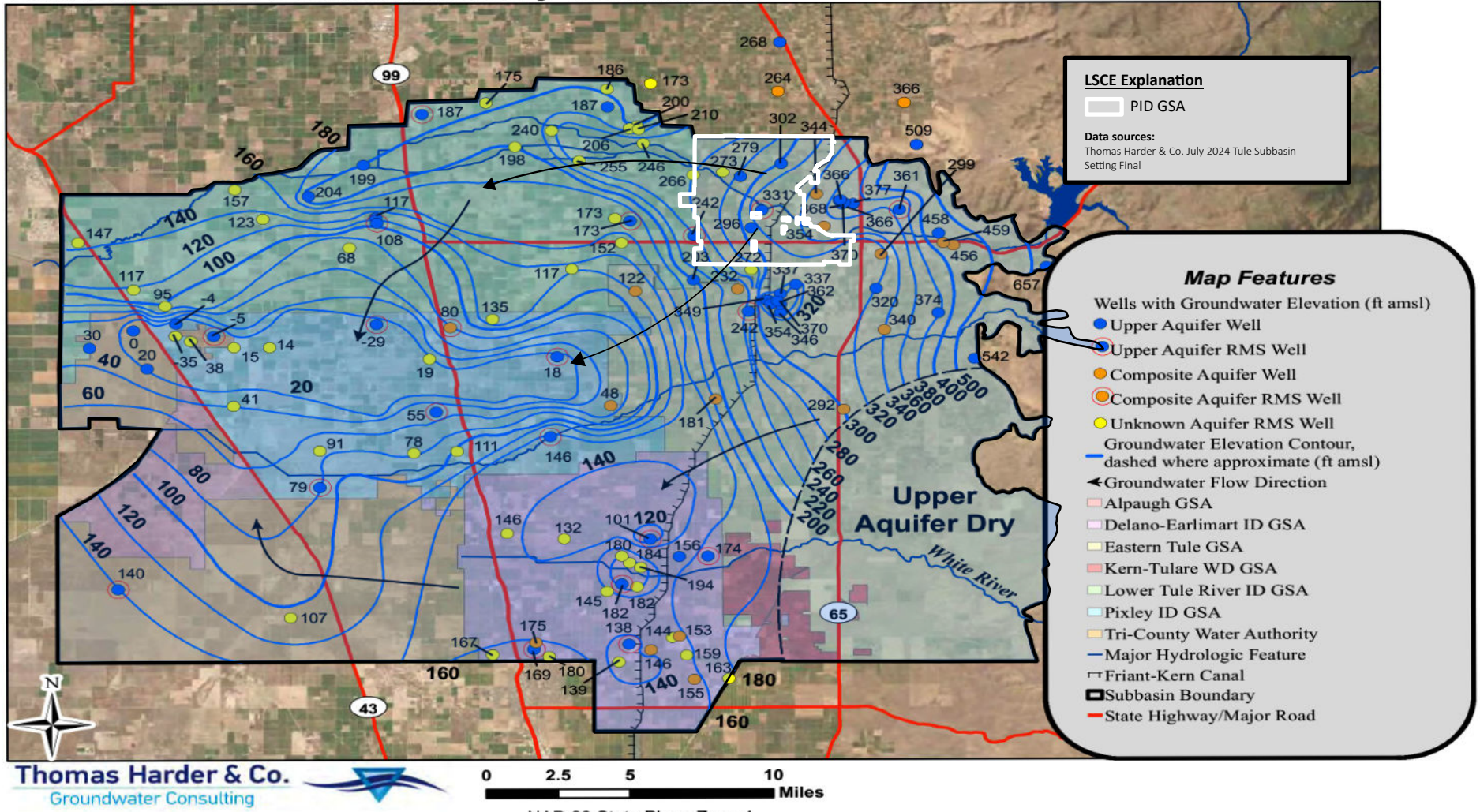
8L1M reference point elevation (RPE) = 507.07 ft asml

32M1 RPE = 536.31 ft asml

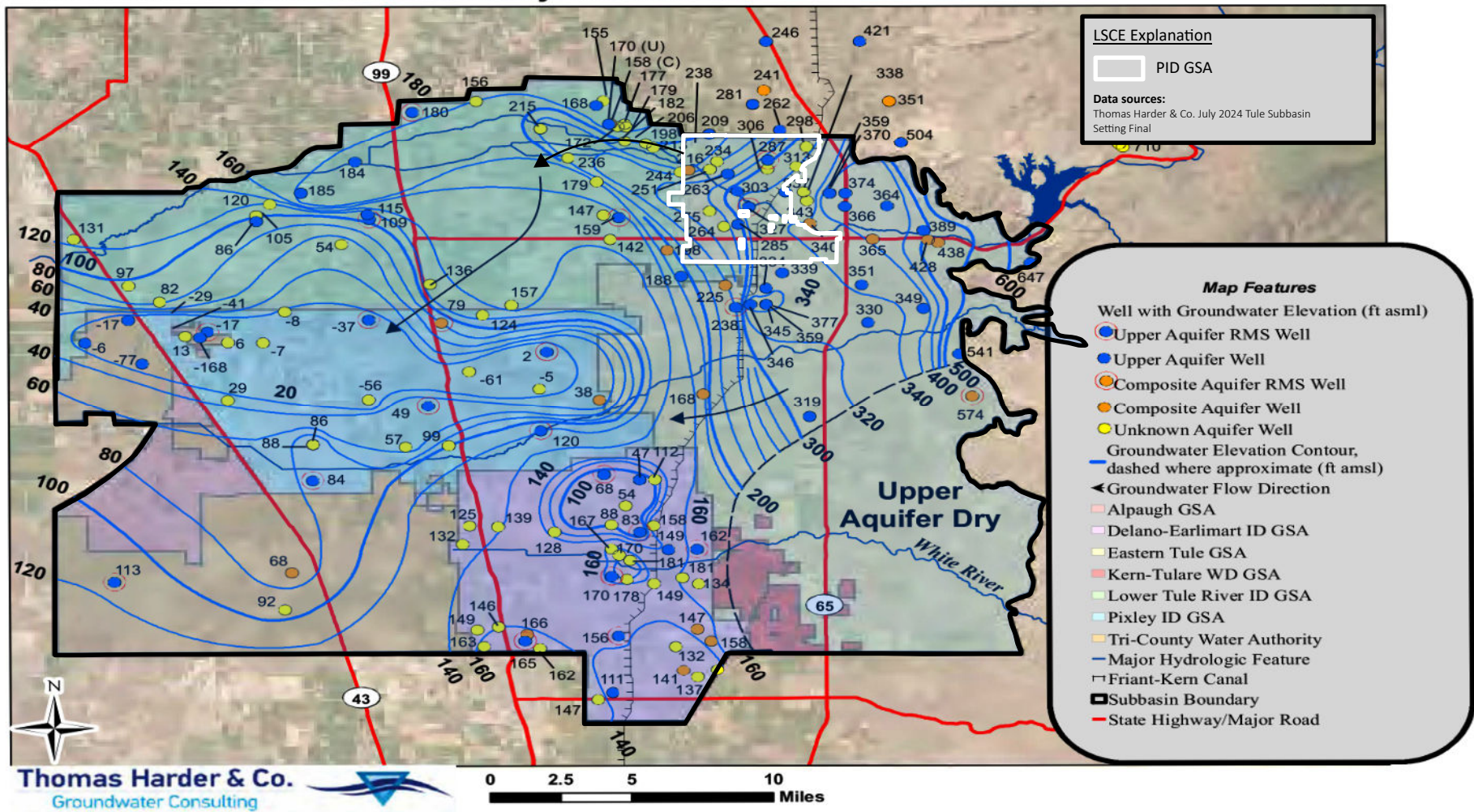
24Q1 RPE = 471.91 ft asml

TSMW-6SM RPE = 516.55 ft asml

Tule Subbasin Technical Advisory Committee



Tule Subbasin Technical Advisory Committee



Thomas Harder & Co.
Groundwater Consulting

NAD 83 State Plane Zone 4
Note: All groundwater elevations are in feet above mean sea level.

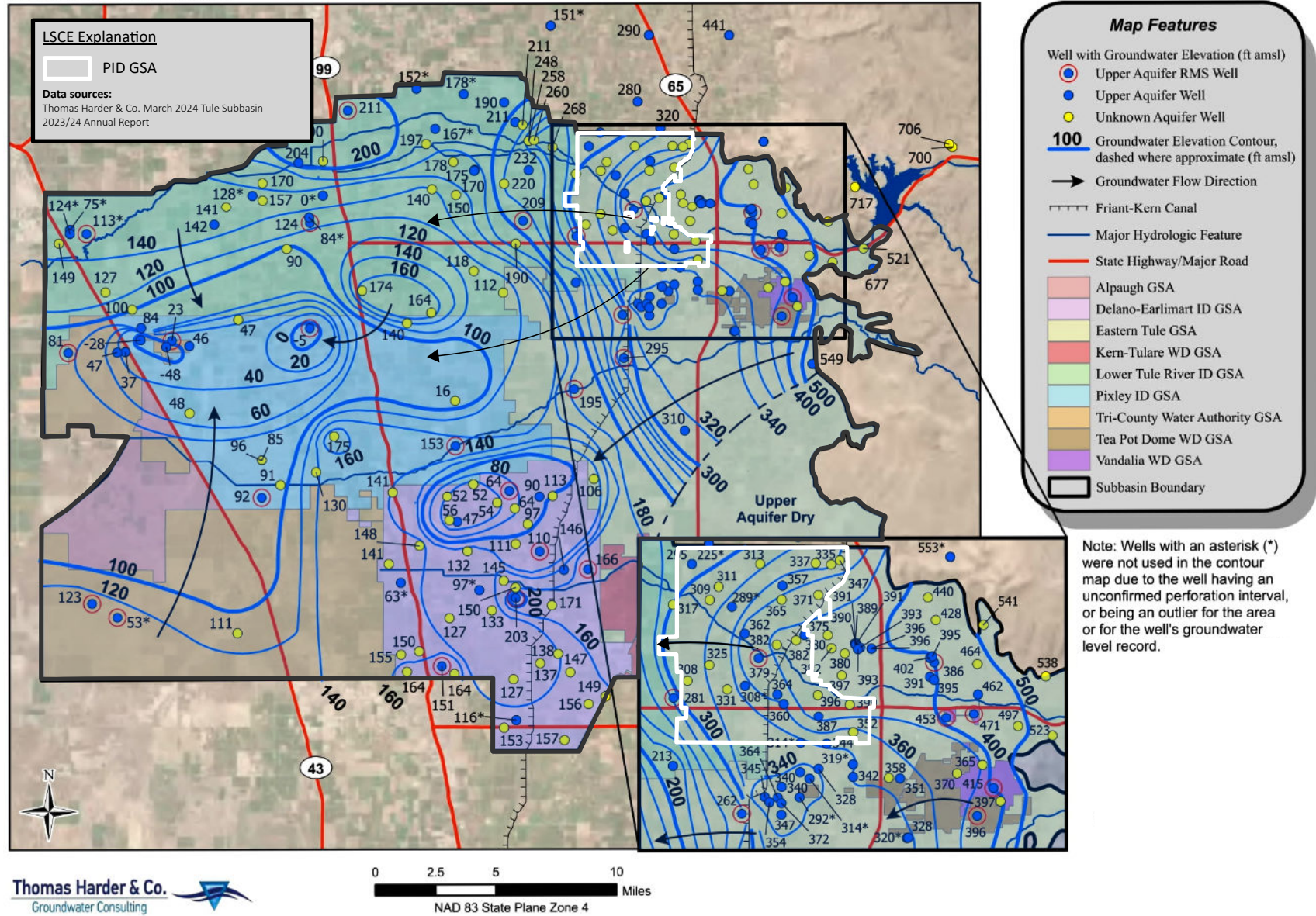


Fall 2022 Upper Aquifer Groundwater Elevation Contours

Groundwater Sustainability Plan
Porterville Irrigation District GSA, Tule Subbasin

Figure 2-20b

**Tule Subbasin Technical Advisory Committee
2023/2024 Annual Report**



Thomas Harder & Co.
Groundwater Consulting

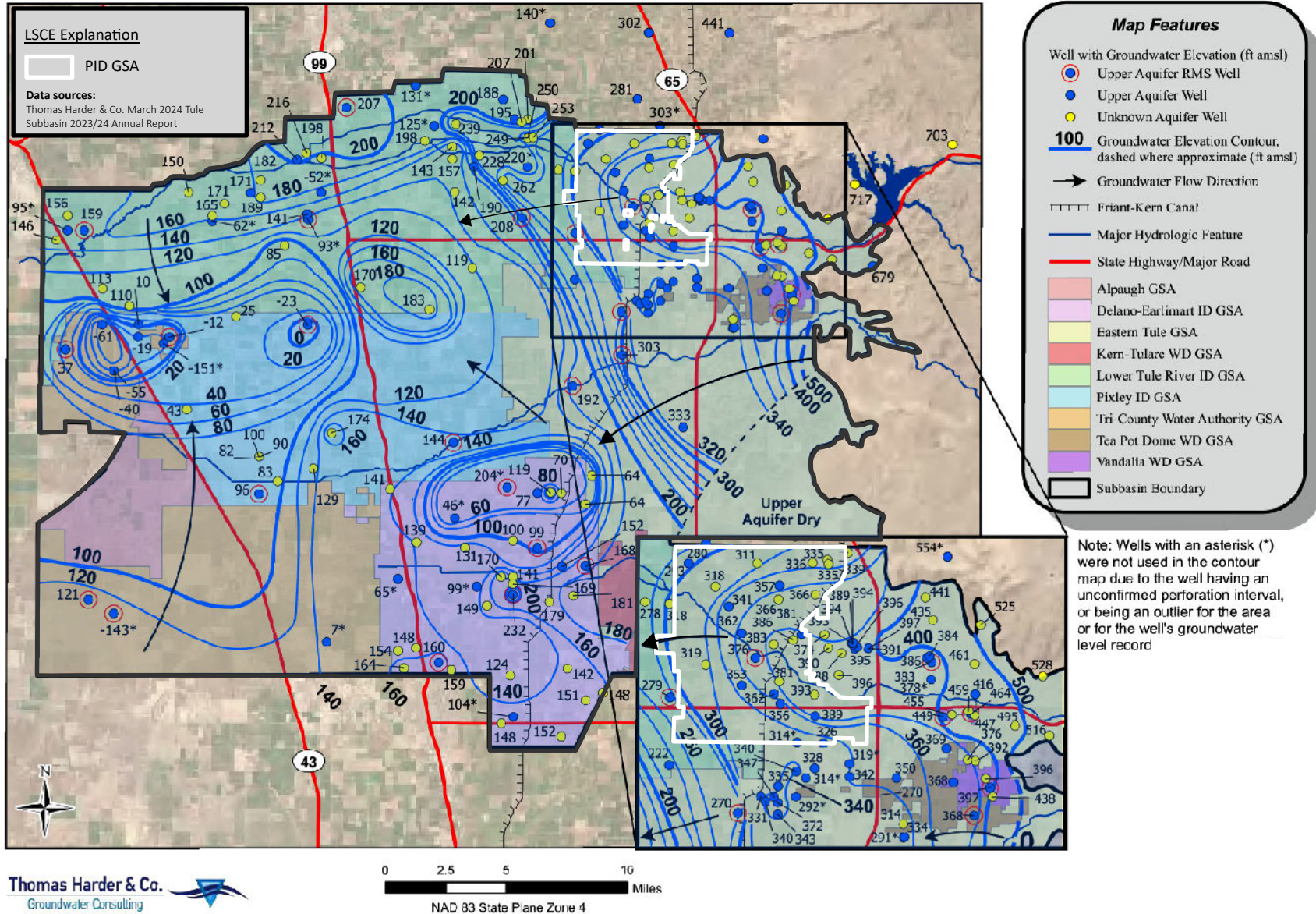


Spring 2024 Upper Aquifer Groundwater Elevation Contours

Groundwater Sustainability Plan
 Porterville Irrigation District GSA, Tule Subbasin

Figure 2-21a

**Tule Subbasin Technical Advisory Committee
2023/2024 Annual Report**



Thomas Harder & Co.
Groundwater Consulting

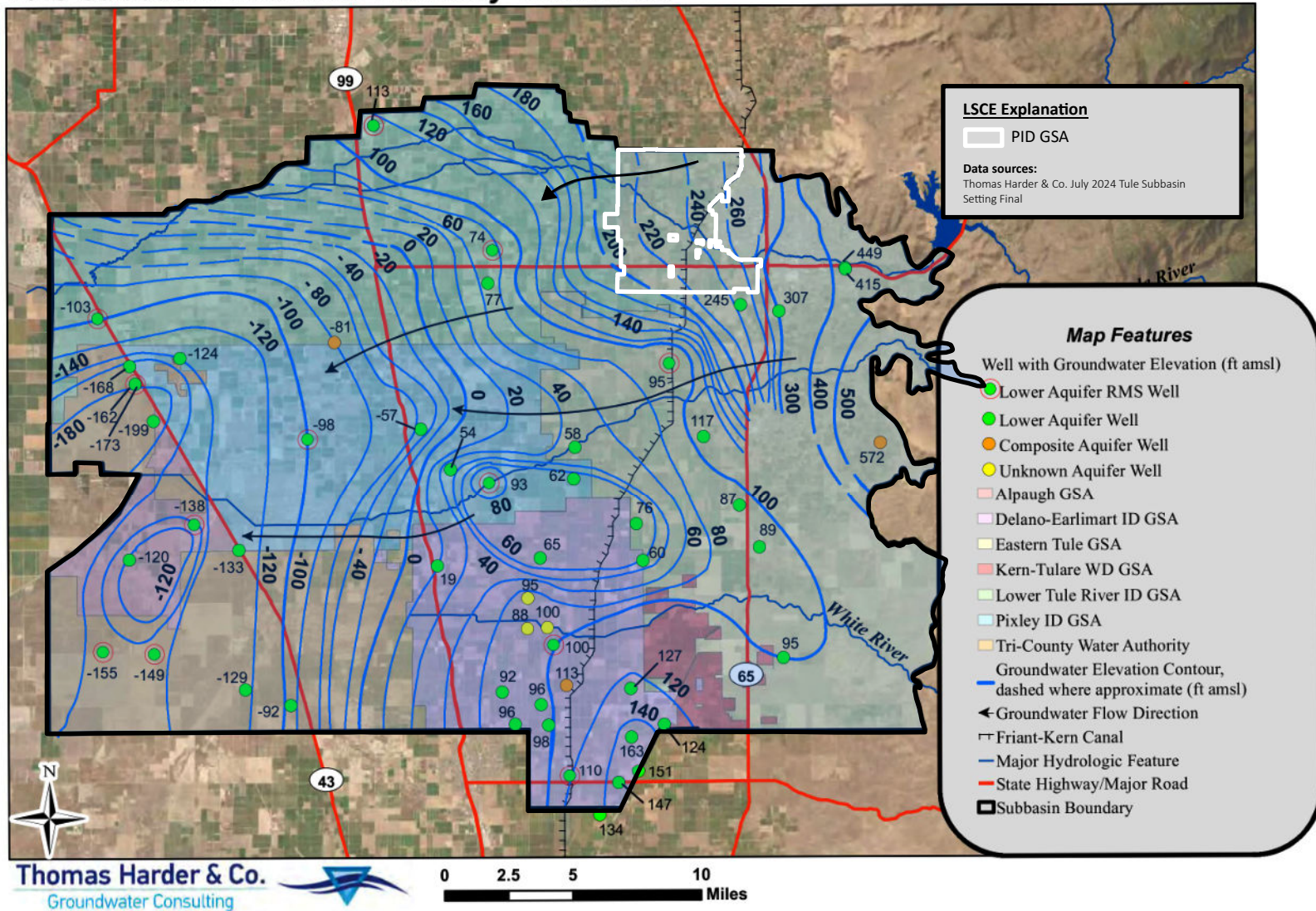


Fall 2024 Upper Aquifer Groundwater Elevation Contours

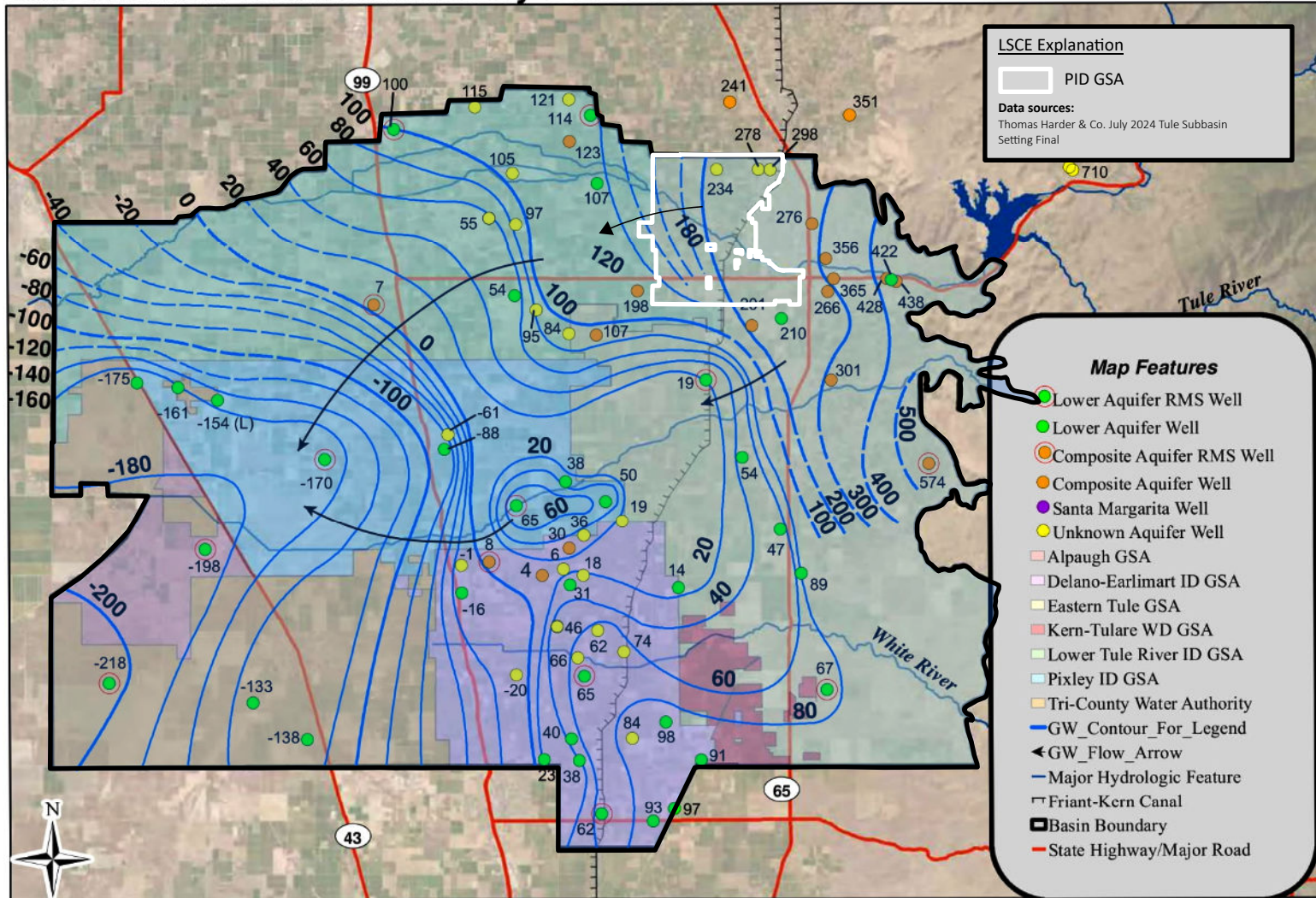
Groundwater Sustainability Plan
Porterville Irrigation District GSA, Tule Subbasin

Figure 2-21b

Tule Subbasin Technical Advisory Committee



Tule Subbasin Technical Advisory Committee



Thomas Harder & Co.
Groundwater Consulting

0 2.5 5 10 Miles

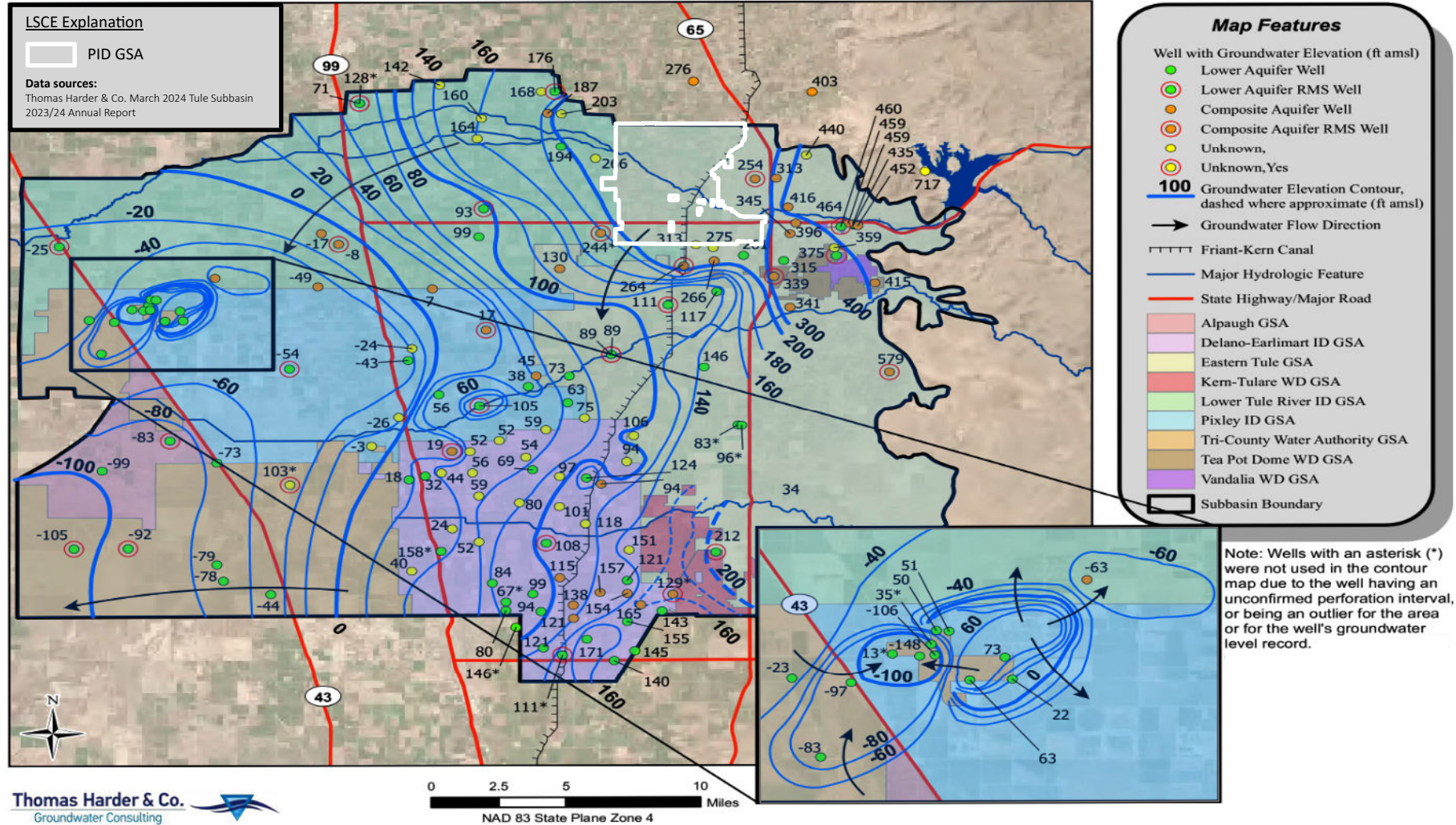
NAD 83 State Plane Zone 4
Note: All groundwater elevations are in feet above mean sea level.



Fall 2022 Lower Aquifer Groundwater Elevation Contours
Groundwater Sustainability Plan
Porterville Irrigation District GSA, Tule Subbasin

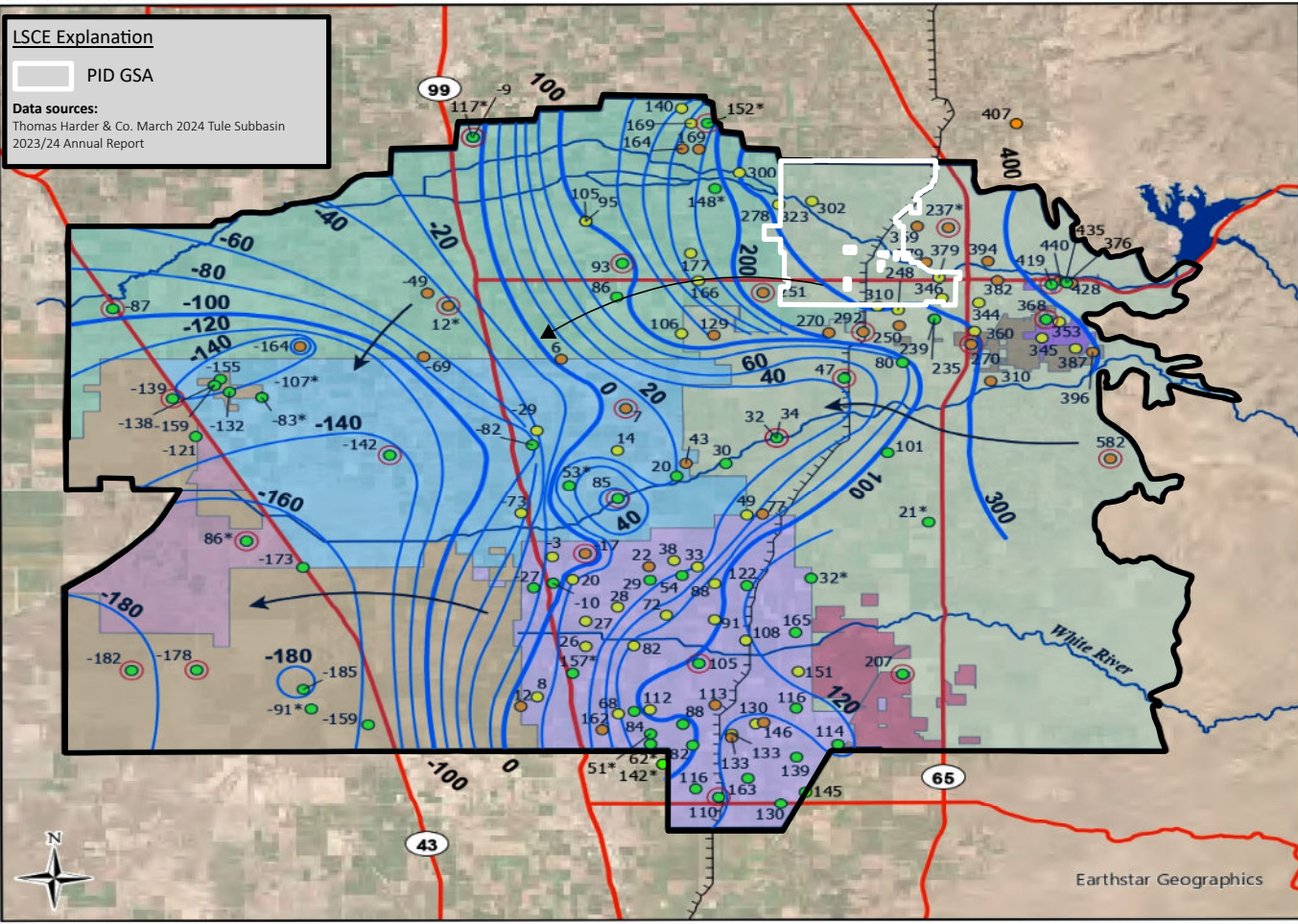
Figure 2-22b

**Tule Subbasin Technical Advisory Committee
2023/2024 Annual Report**



**Tule Subbasin Technical Advisory Committee
2023/2024 Annual Report**

LSCE Explanation
 PID GSA
 Data sources:
 Thomas Harder & Co. March 2024 Tule Subbasin
 2023/24 Annual Report

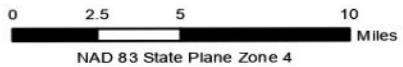


Map Features

- Well with Groundwater Elevation (ft amsl)
 - Lower Aquifer RMS Well
 - Lower Aquifer Well
 - Composite Aquifer RMS Well
 - Composite Aquifer Well
 - Unknown Aquifer Well
- Groundwater Elevation Contour, dashed where approximate (ft amsl)
- 100 → Groundwater Flow Direction
- ▬▬▬▬ Friant-Kern Canal
- Major Hydrologic Feature
- State Highway/Major Road
- Alpaugh GSA
- Delano-Earlimart ID GSA
- Eastern Tule GSA
- Kern-Tulare WD GSA
- Lower Tule River ID GSA
- Pixley ID GSA
- Tri-County Water Authority GSA
- Tea Pot Dome WD GSA
- Vandalia WD GSA
- Subbasin Boundary

Note: Wells with an asterisk (*) were not used in the contour map due to the well having an unconfirmed perforation interval, or being an outlier for the area or for the well's groundwater level record.

Thomas Harder & Co.
Groundwater Consulting

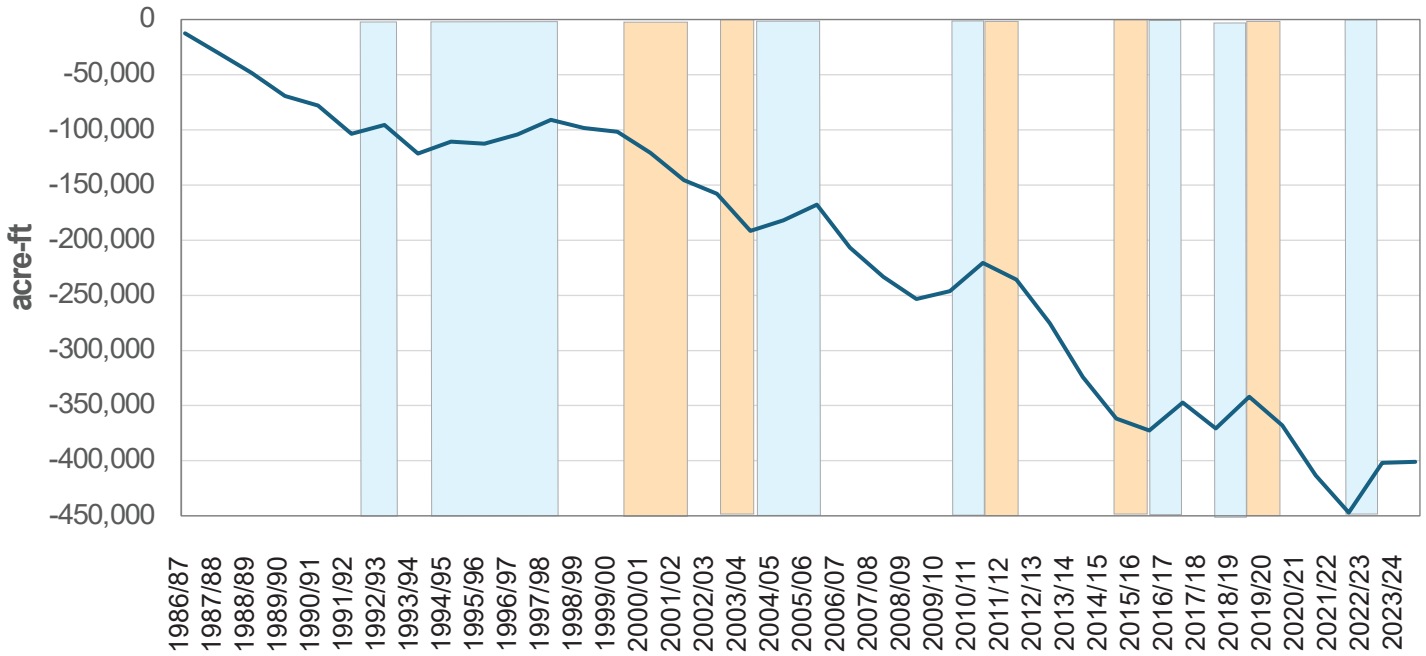


Fall 2024 Lower Aquifer Groundwater Elevation Contours

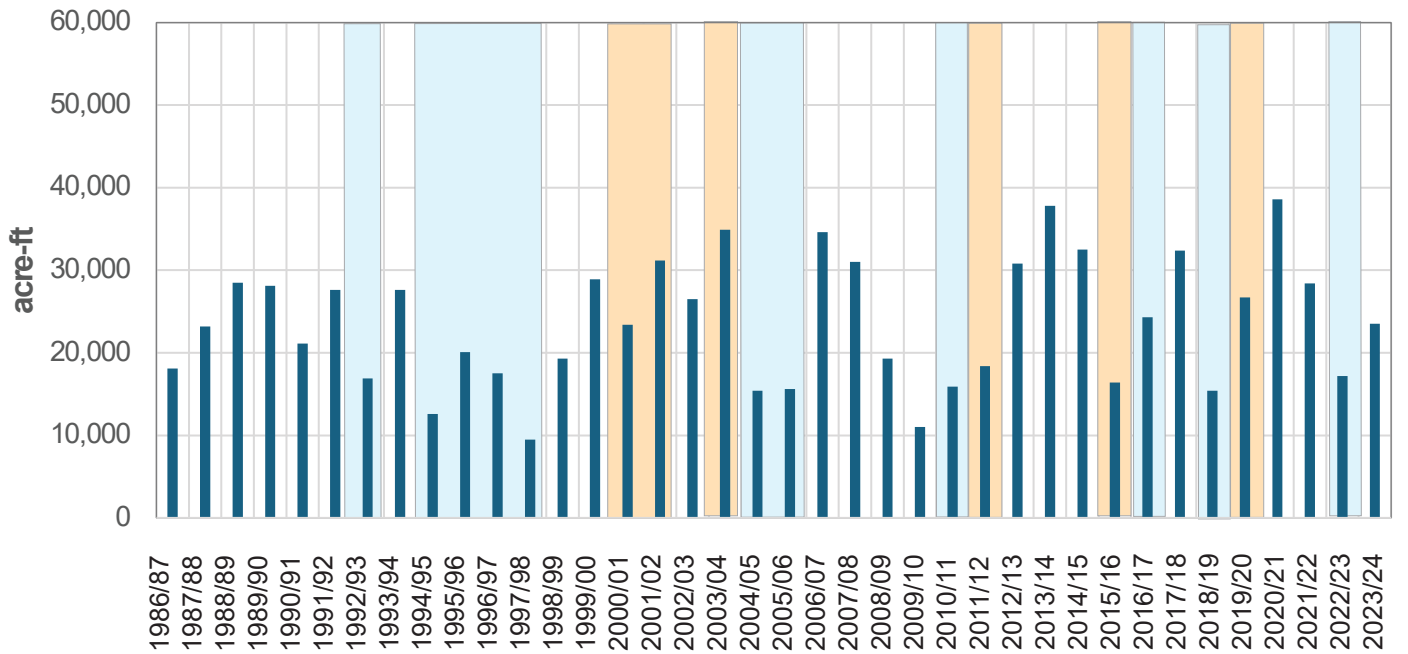
Groundwater Sustainability Plan
 Porterville Irrigation District GSA, Tule Subbasin

Figure 2-23b

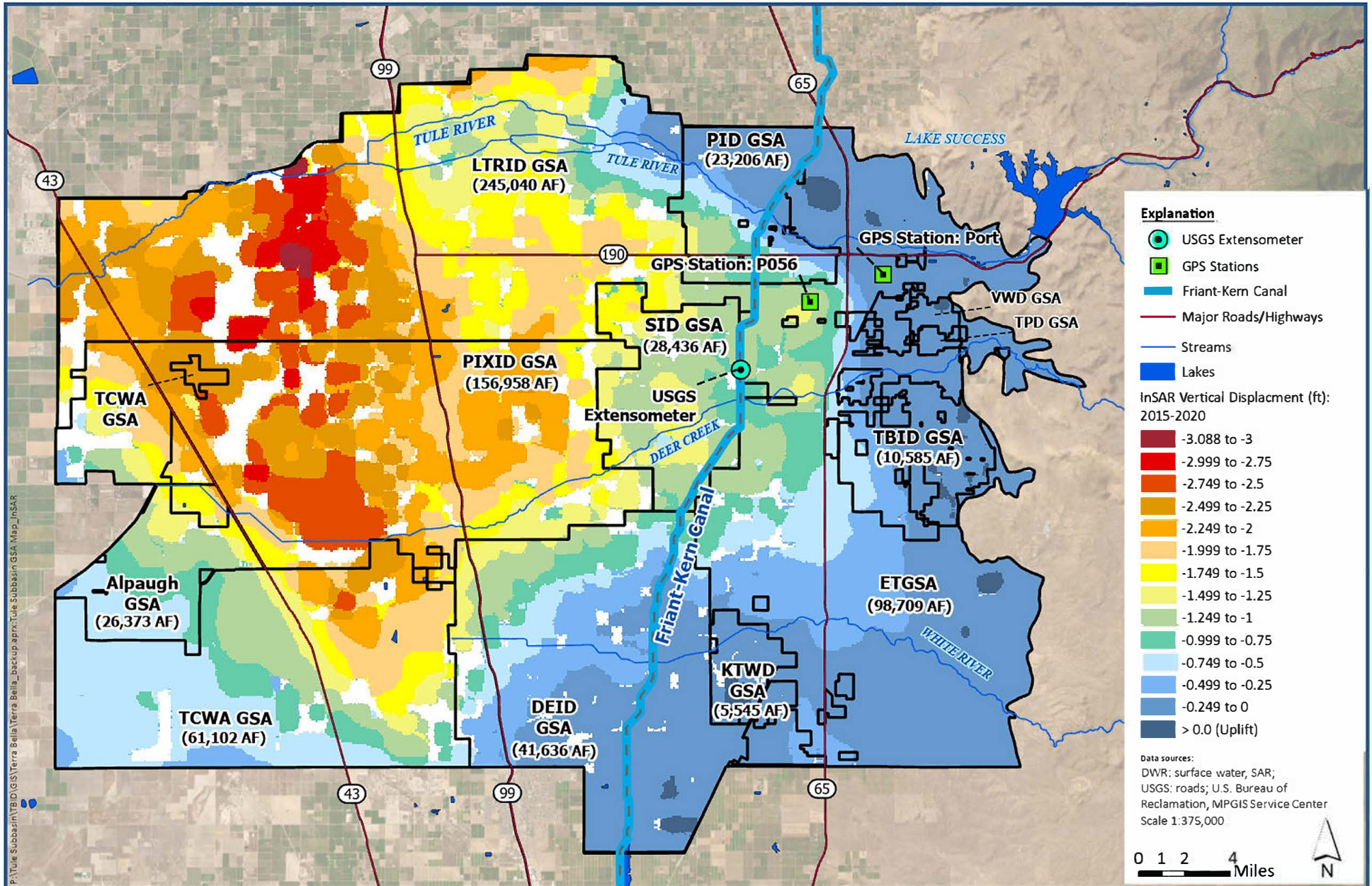
Cumulative Change in Storage/Year

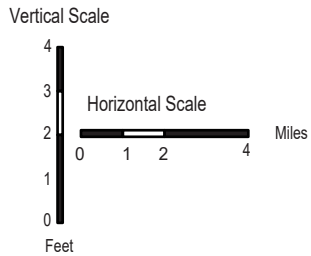
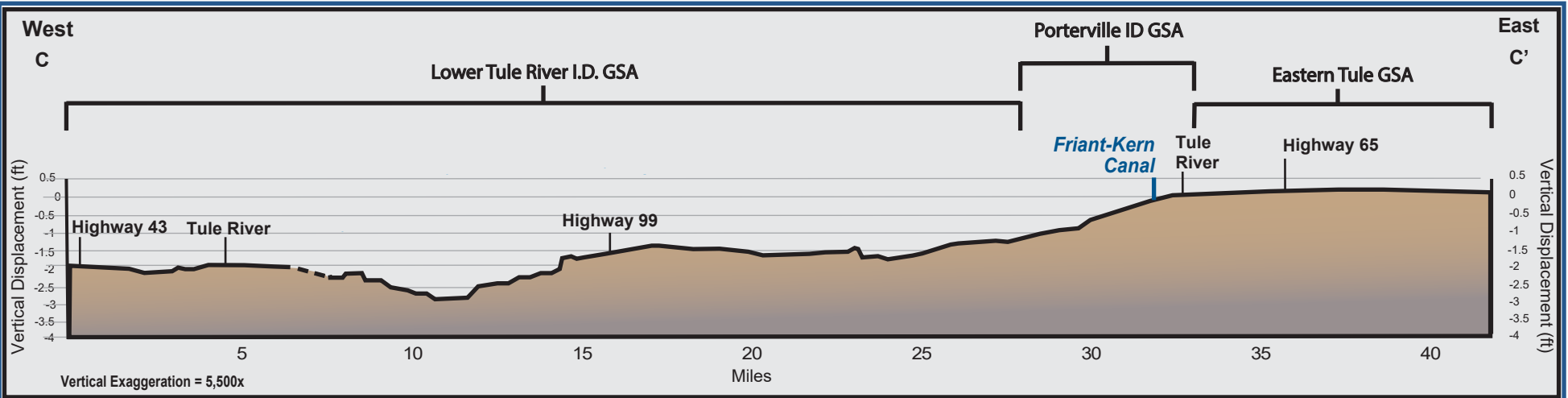


Annual Groundwater Pumping



Dry Year
 Wet Year

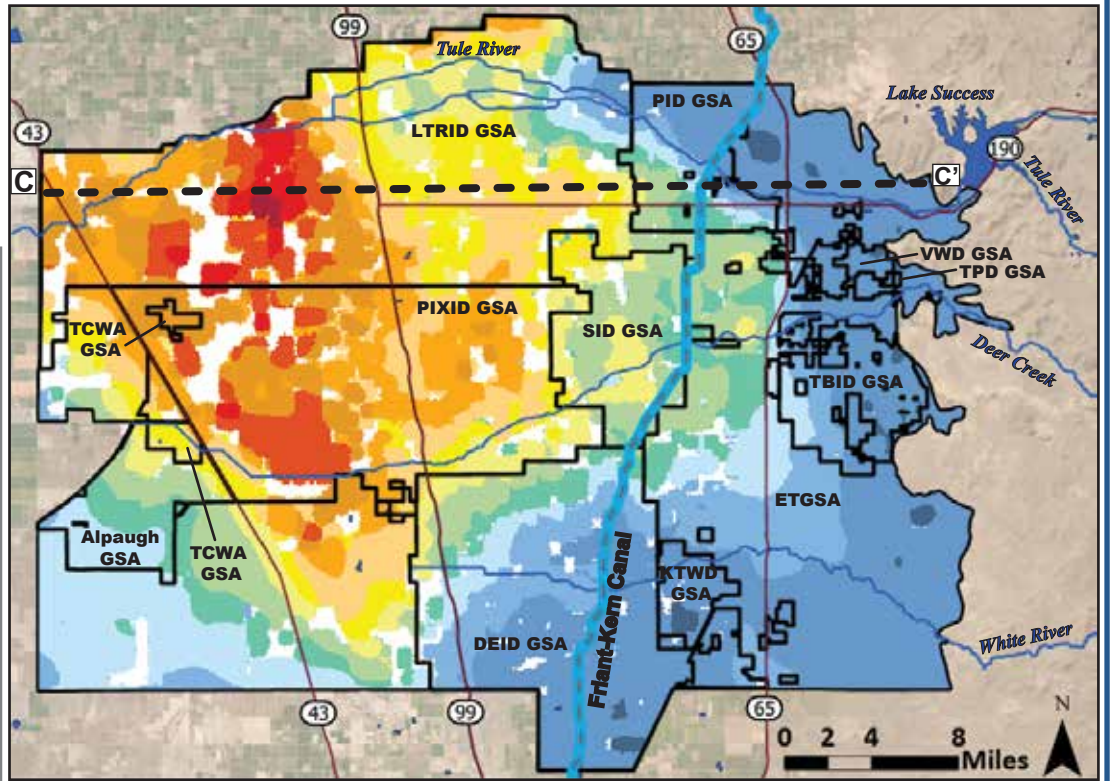
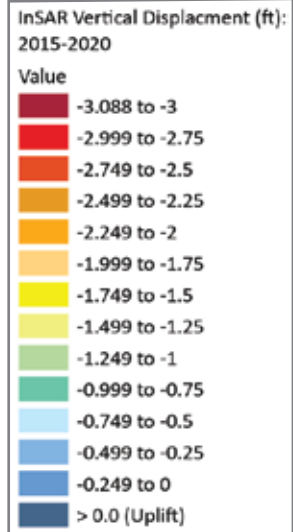


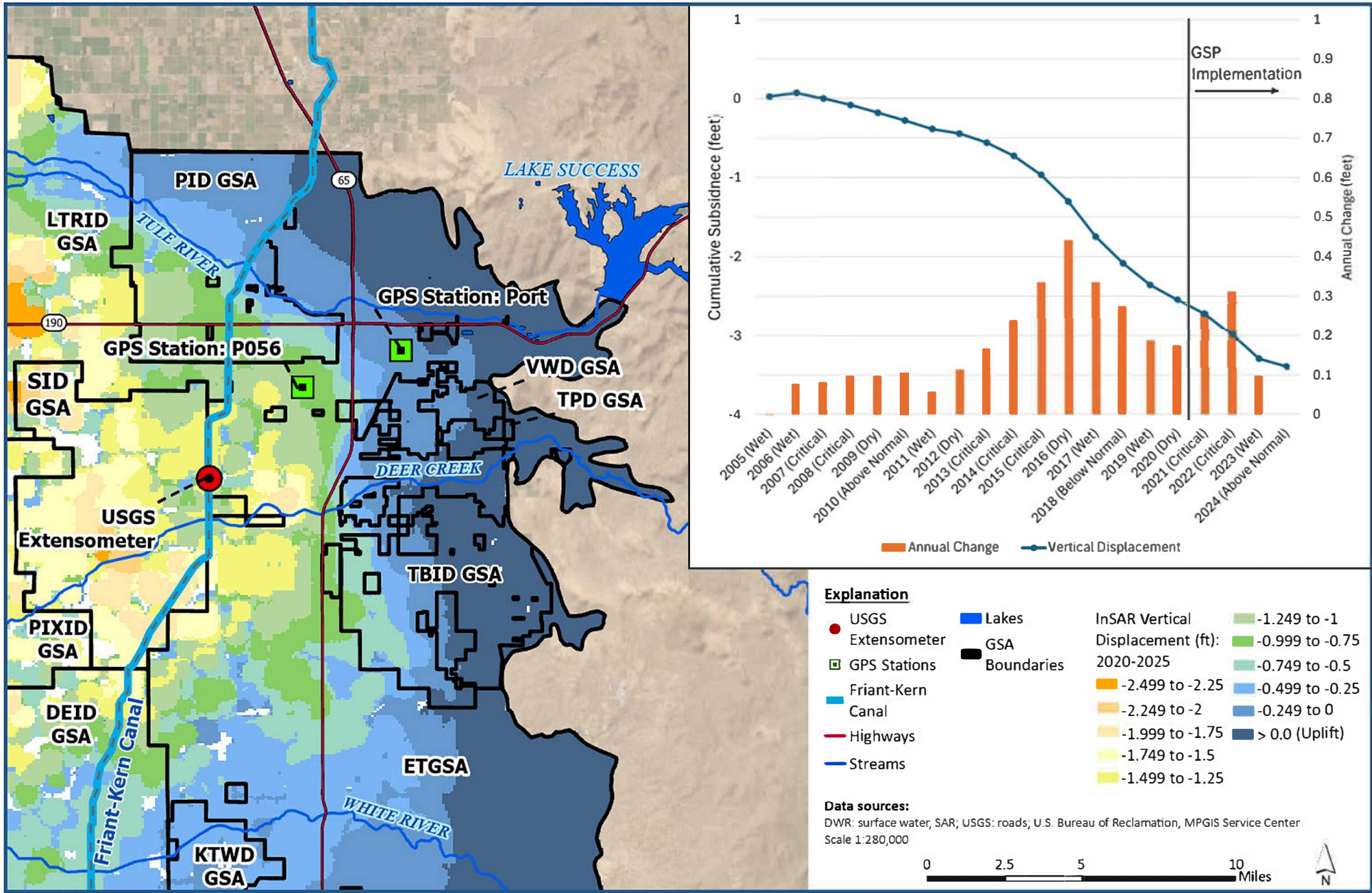


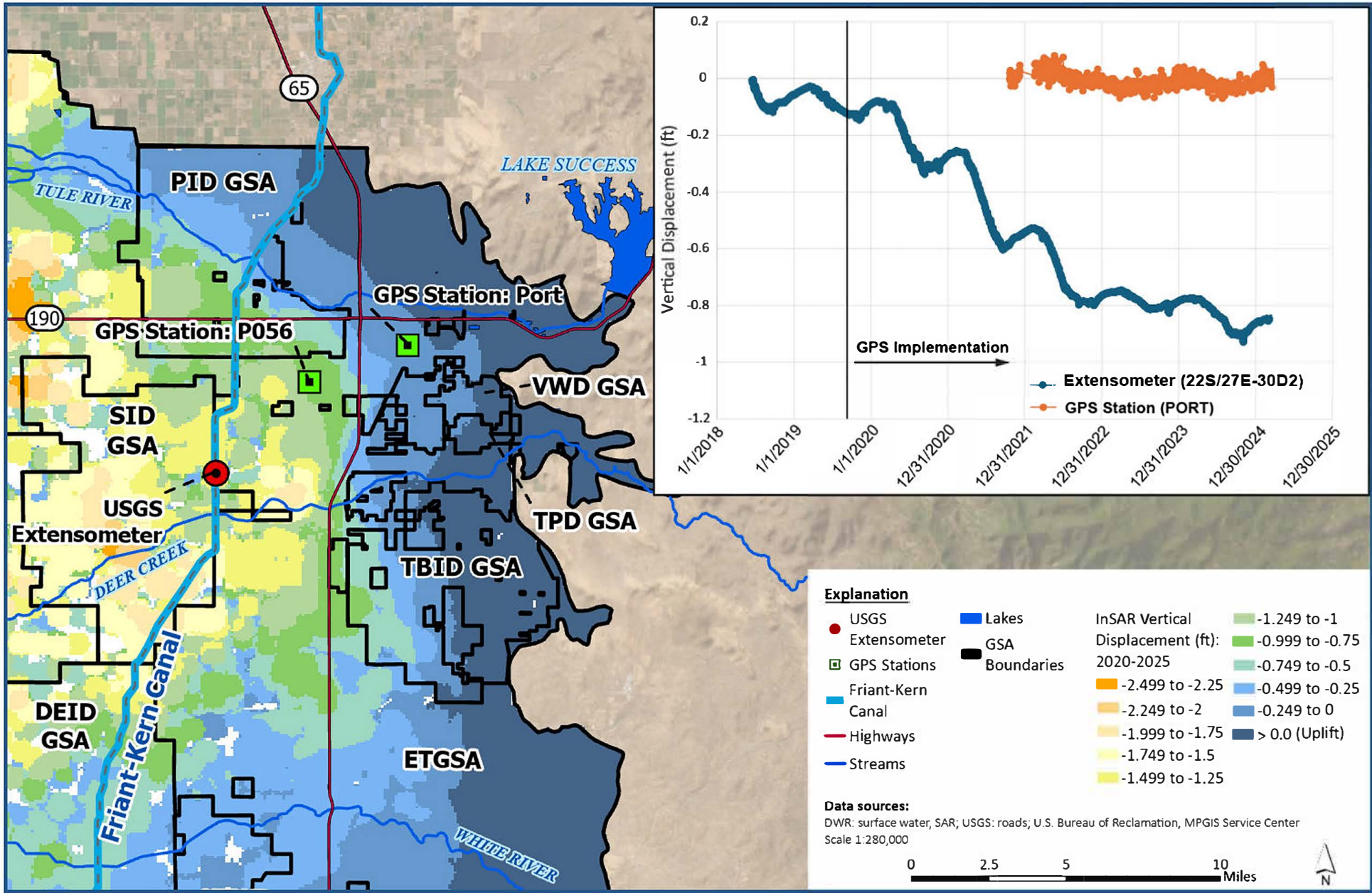
Notes:

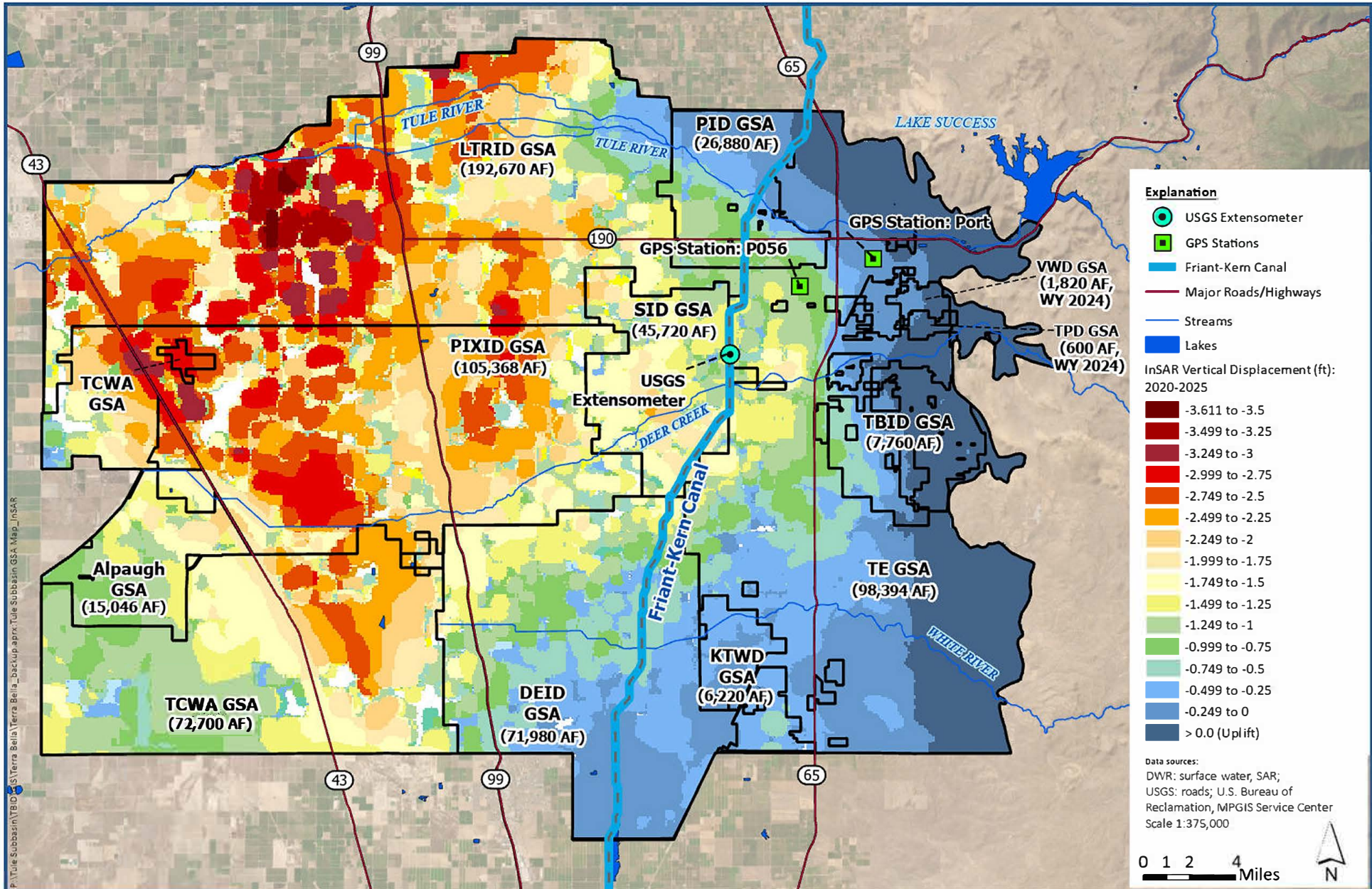
Tre Altamira InSAR Vertical Displacement data from California Department of Water Resources (DWR).
<https://gis.water.ca.gov/arcgisimg/rest/services/SAR>

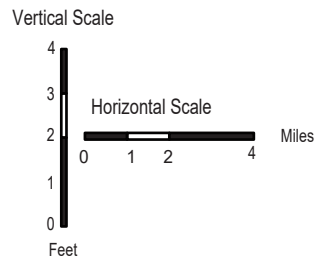
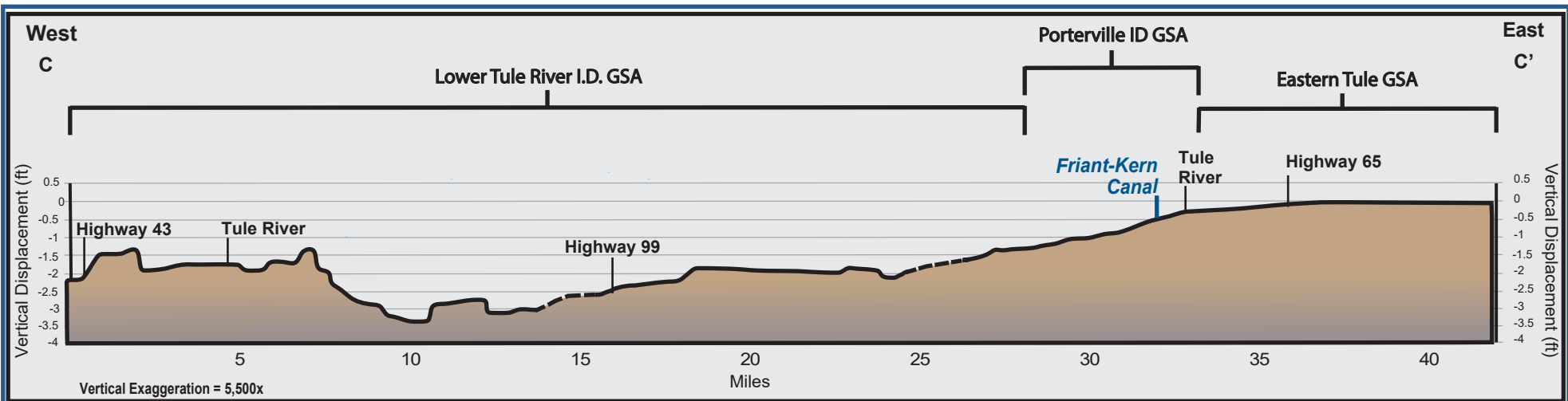
- = C- C' Profile Line (Inset Map)
- = Inferred data (Profile)





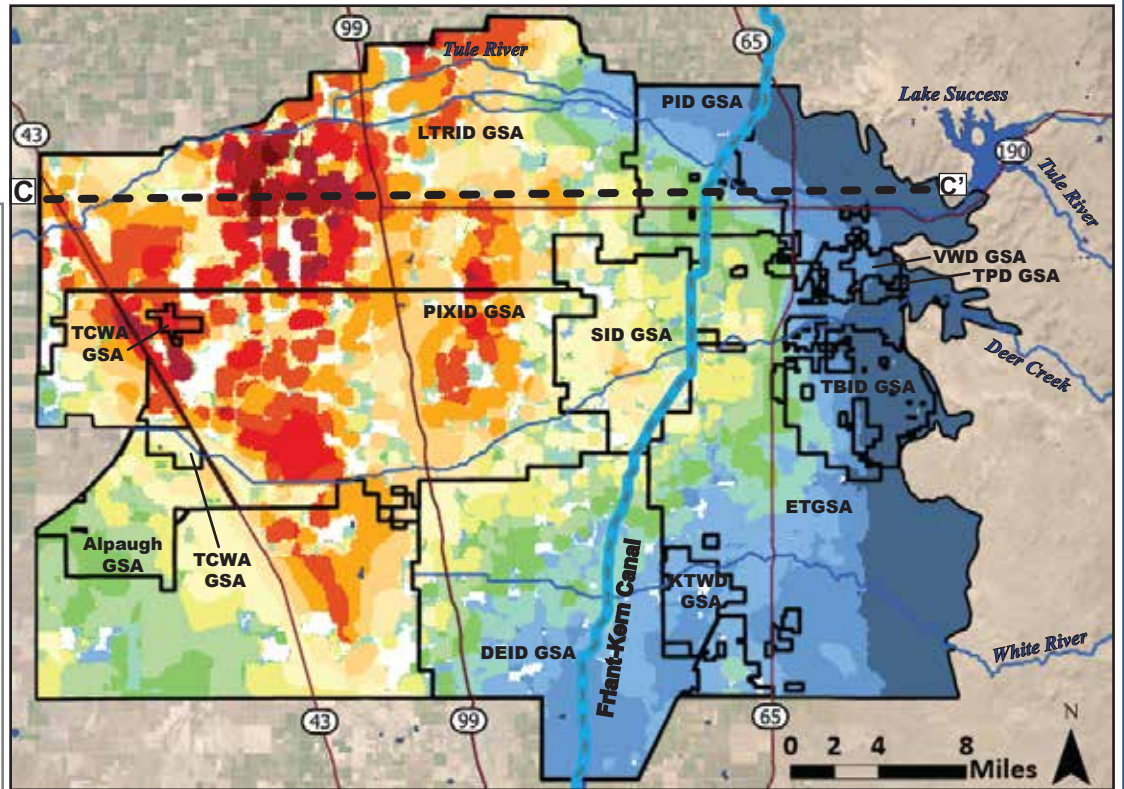
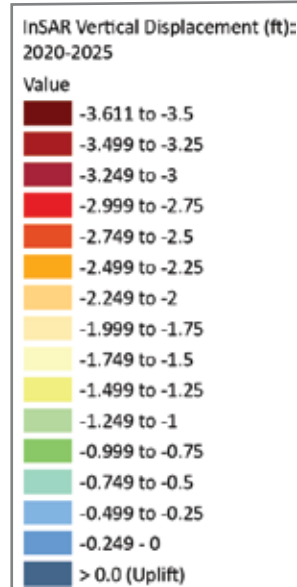


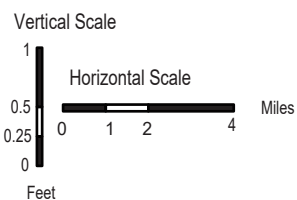
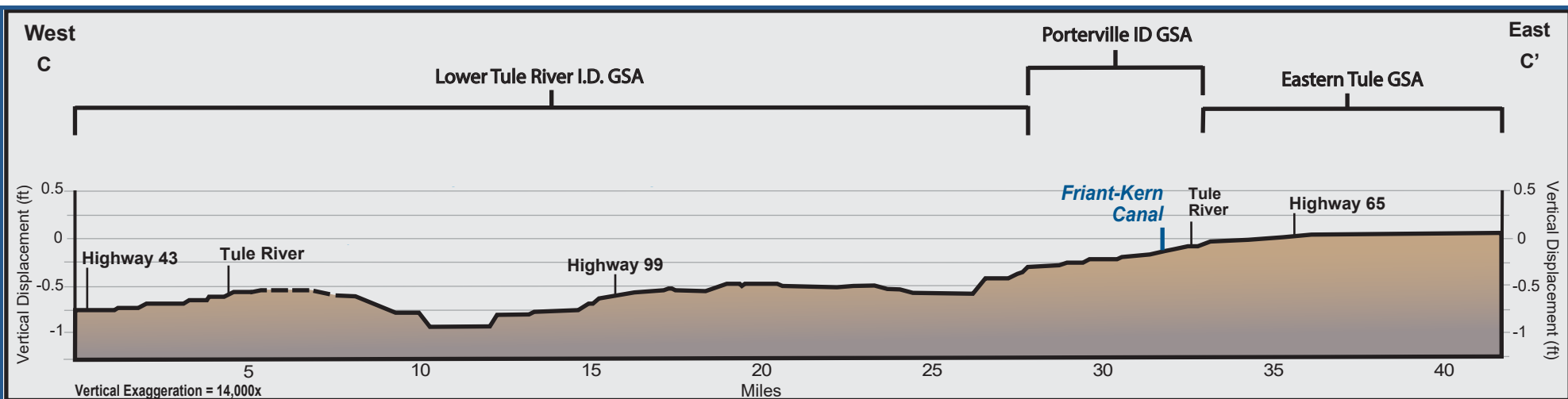




Notes:
 Tre Altamira InSAR Vertical Displacement data from California Department of Water Resources (DWR).
<https://gis.water.ca.gov/arcgisimg/rest/services/SAR>

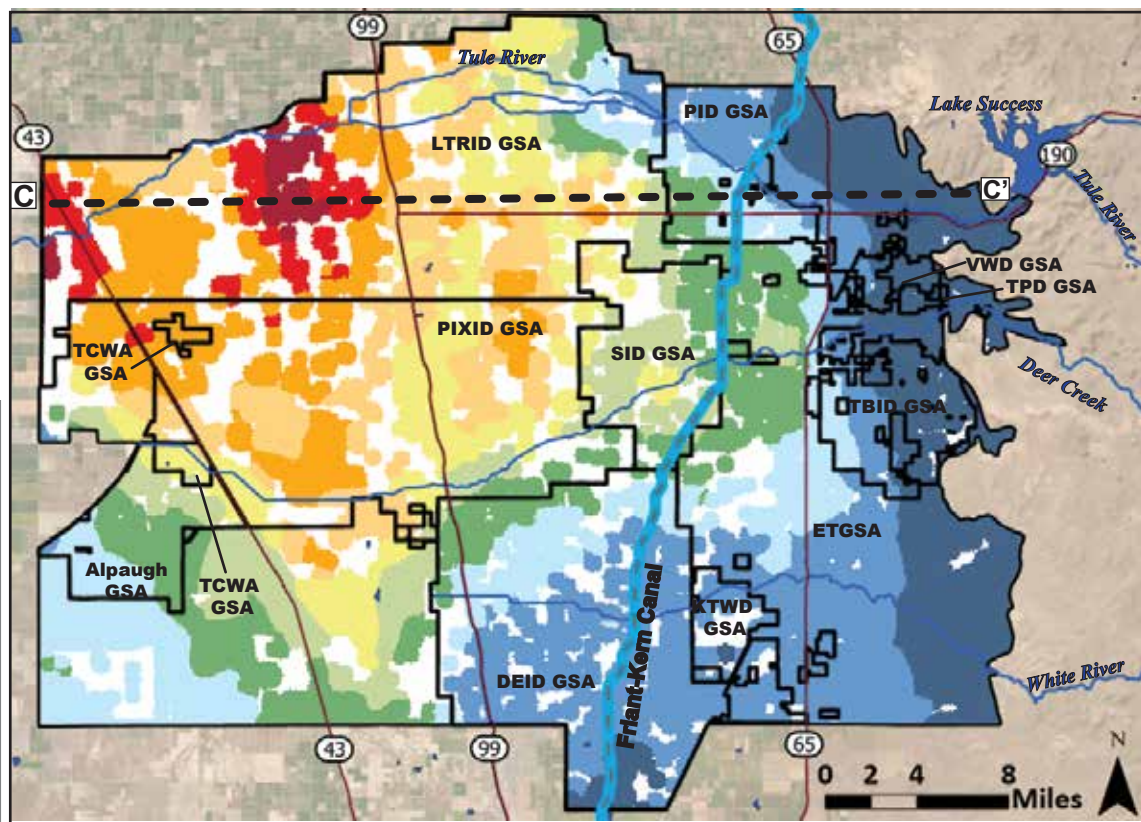
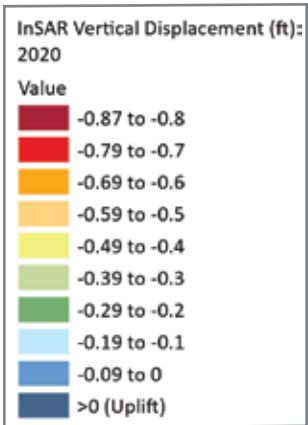
--- = C- C' Profile Line (Inset Map)
 - - - - = Inferred data (Profile)

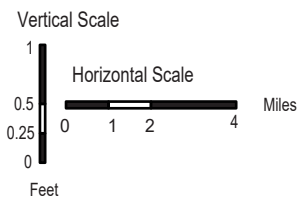
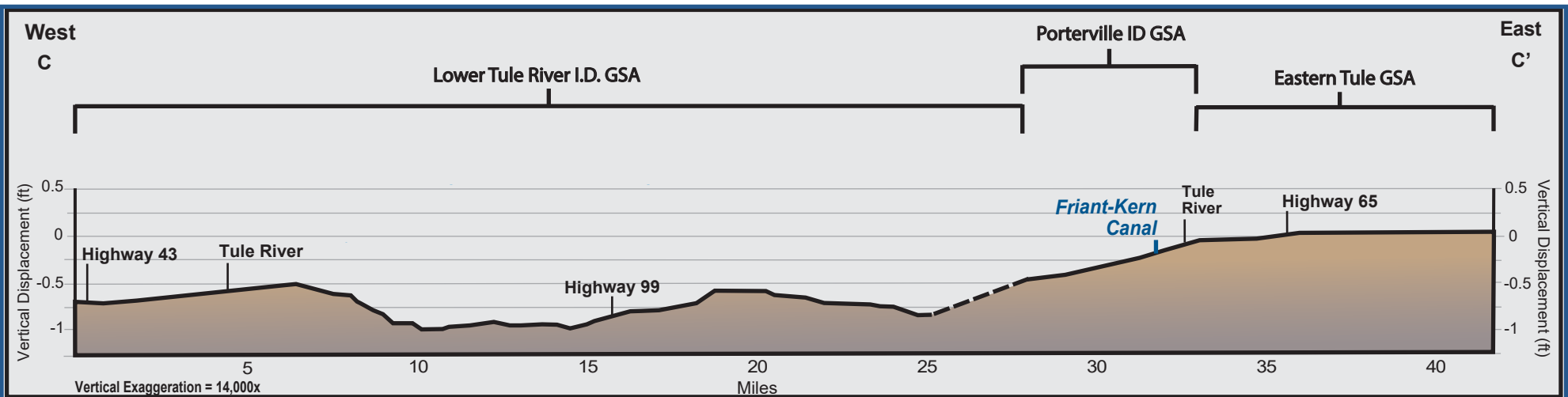




Notes:
 Tre Altamira InSAR Vertical Displacement data from California Department of Water Resources (DWR).
<https://gis.water.ca.gov/arcgisimg/rest/services/SAR>

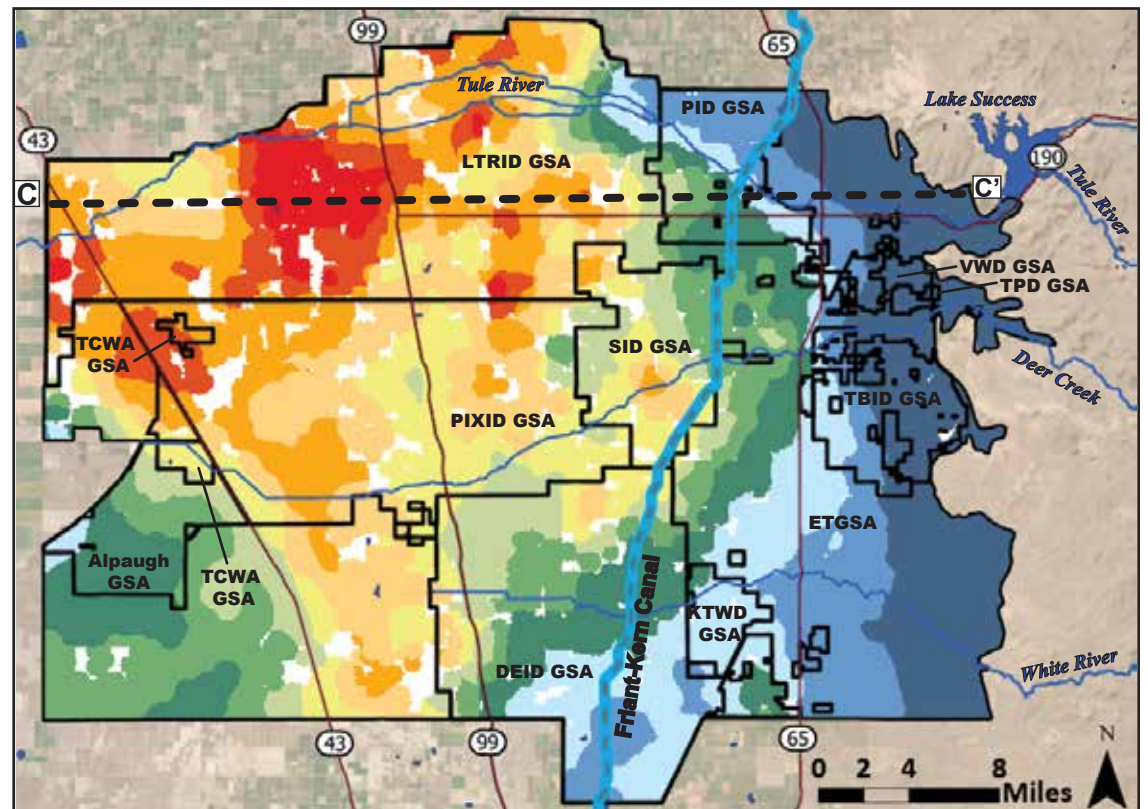
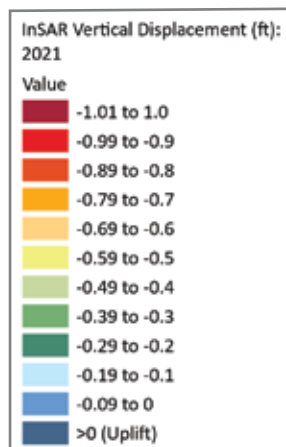
--- = C- C' Profile Line (Inset Map)
 - - - - = Inferred data (Profile)

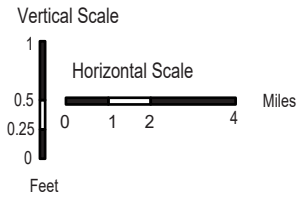
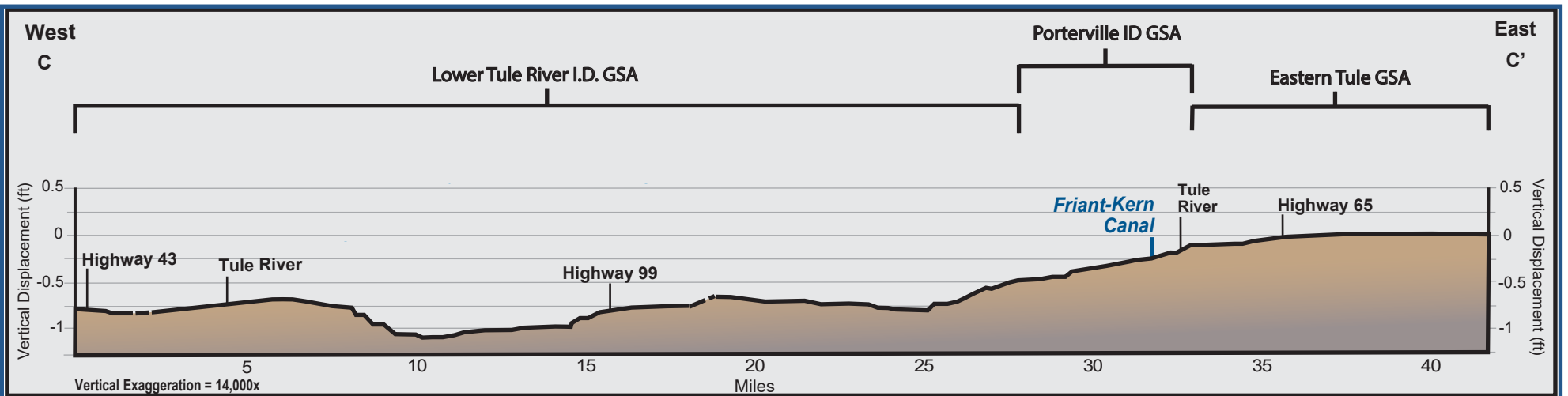




Notes:
 Tre Altamira InSAR Vertical Displacement data from California Department of Water Resources (DWR).
<https://gis.water.ca.gov/arcgisimg/rest/services/SAR>

- — = C- C' Profile Line (Inset Map)
- - - = Inferred data (Profile)

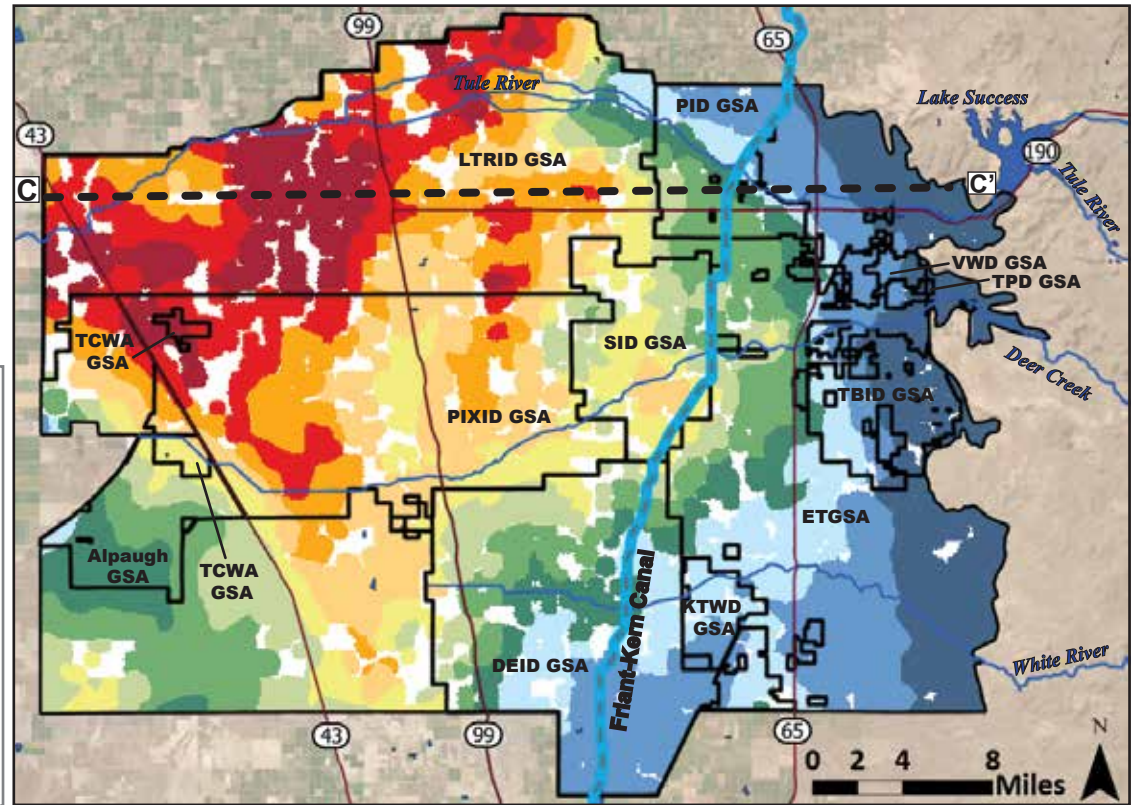
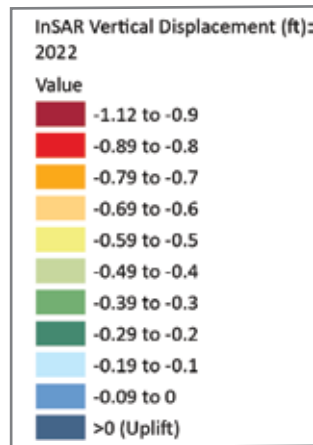


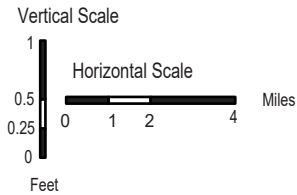
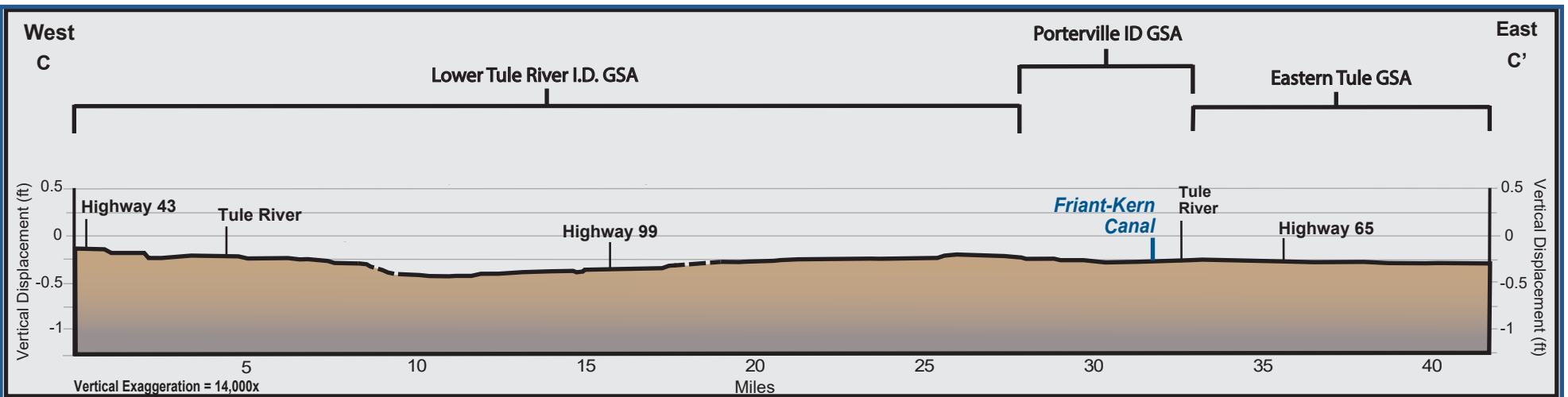


Notes:

Tre Altamira InSAR Vertical Displacement data from California Department of Water Resources (DWR).
<https://gis.water.ca.gov/arcgisimg/rest/services/SAR>

- — = C- C' Profile Line (Inset Map)
- - - = Inferred data (Profile)

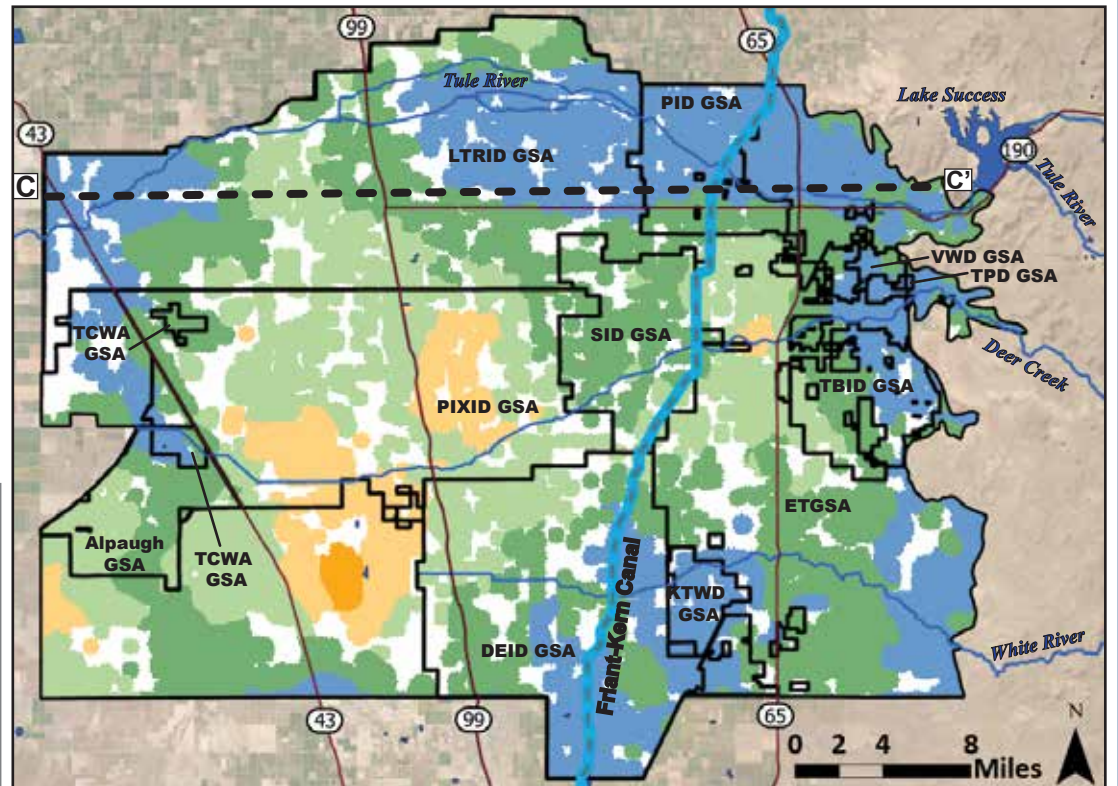
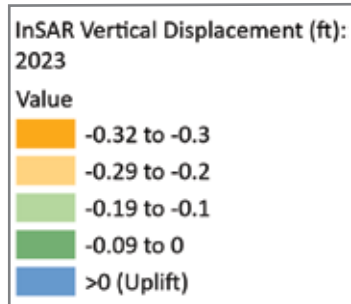


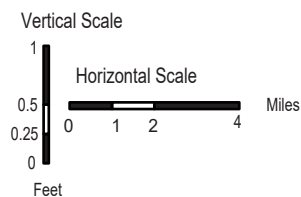
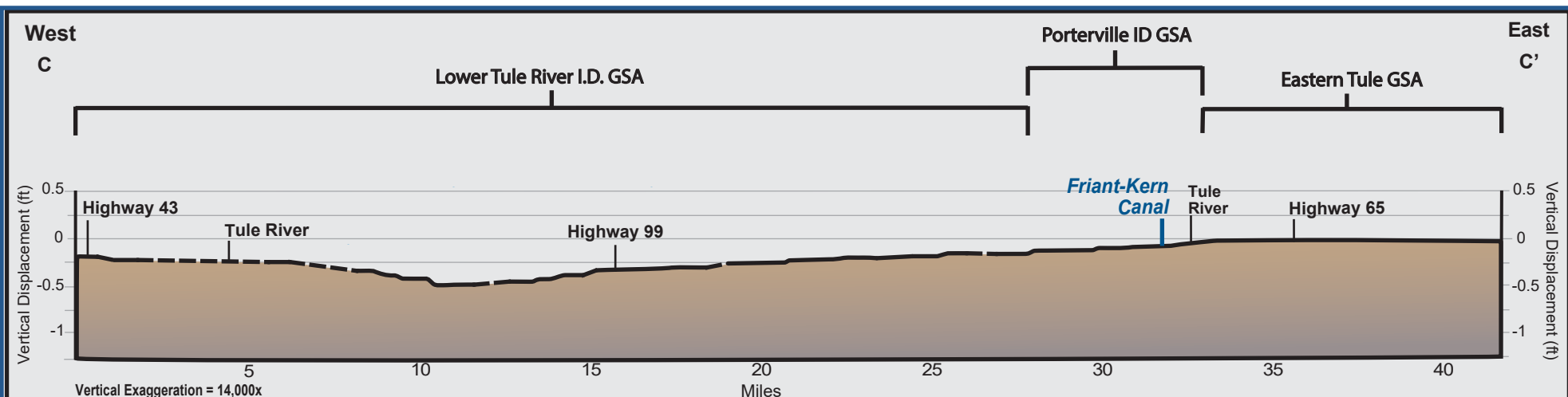


Notes:

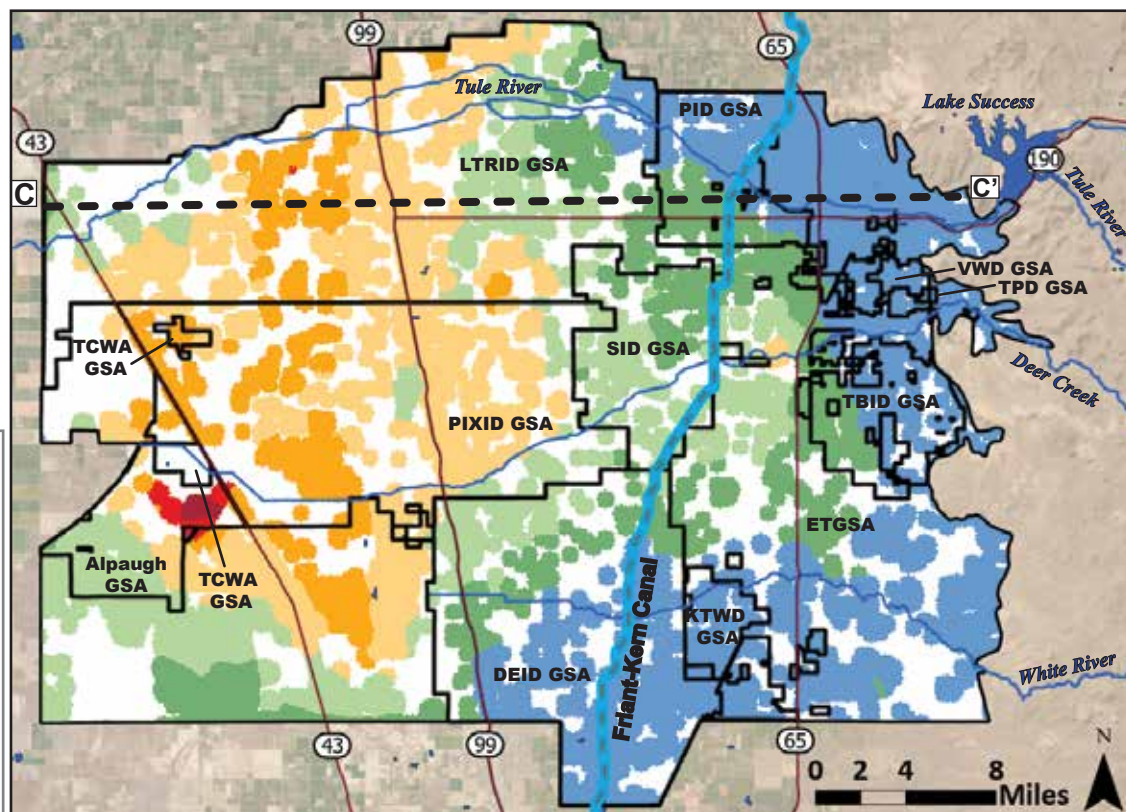
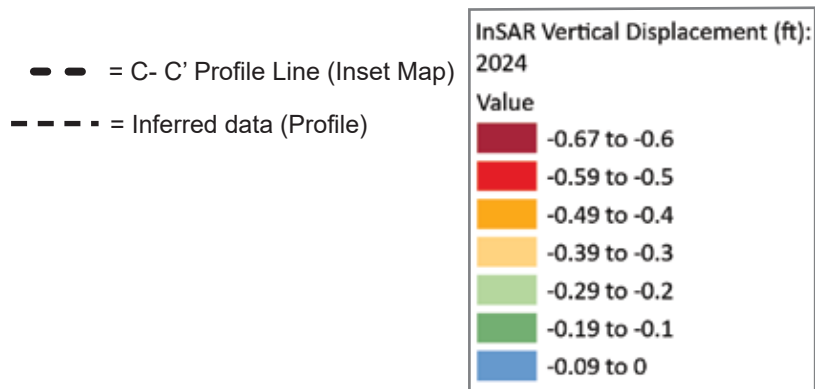
Tre Altamira InSAR Vertical Displacement data from California Department of Water Resources (DWR).
<https://gis.water.ca.gov/arcgisimg/rest/services/SAR>

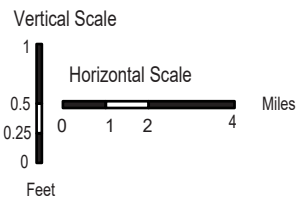
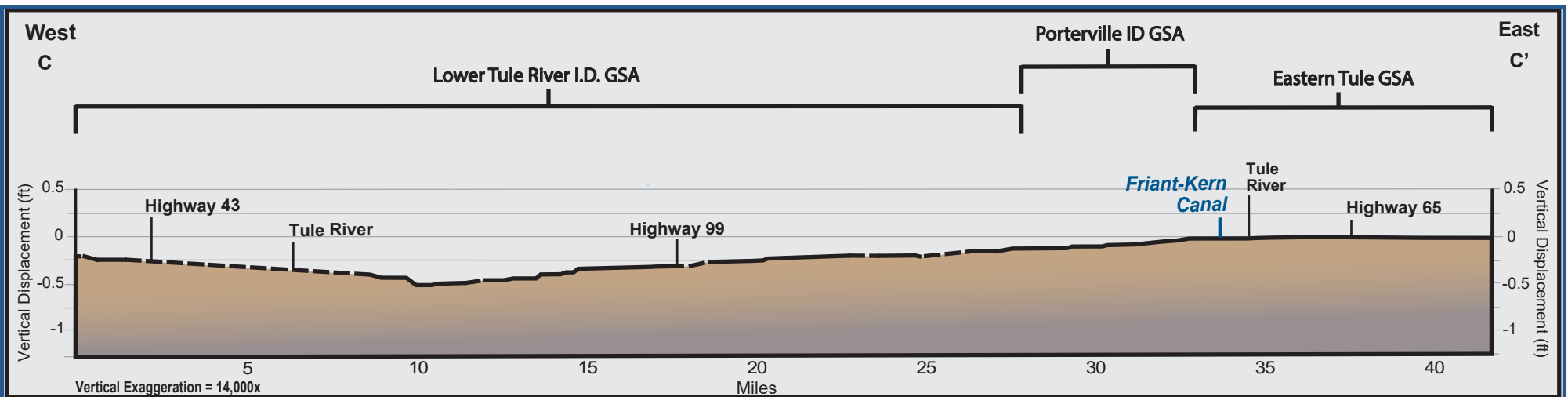
- — = C- C' Profile Line (Inset Map)
- - - = Inferred data (Profile)





Notes:
The Altamira InSAR Vertical Displacement data from California Department of Water Resources (DWR).
<https://gis.water.ca.gov/arcgisimg/rest/services/SAR>

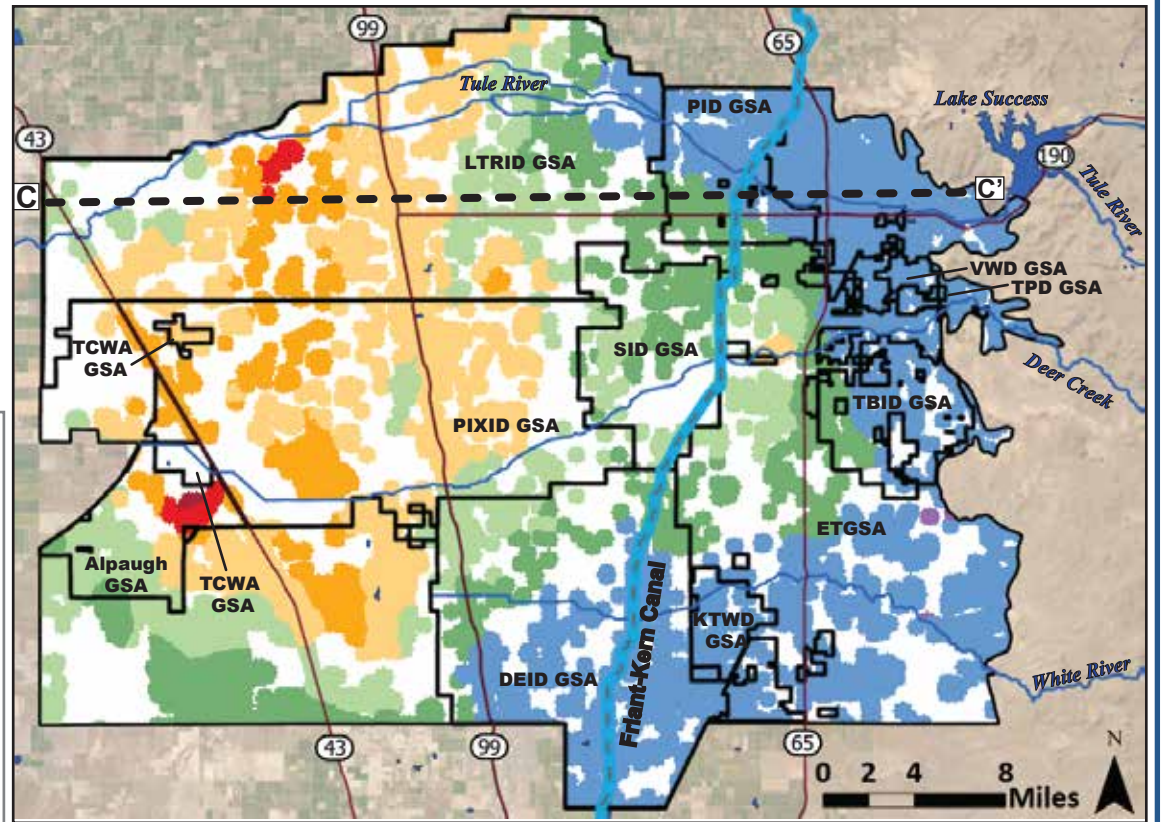
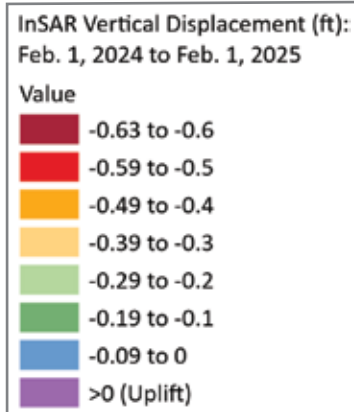


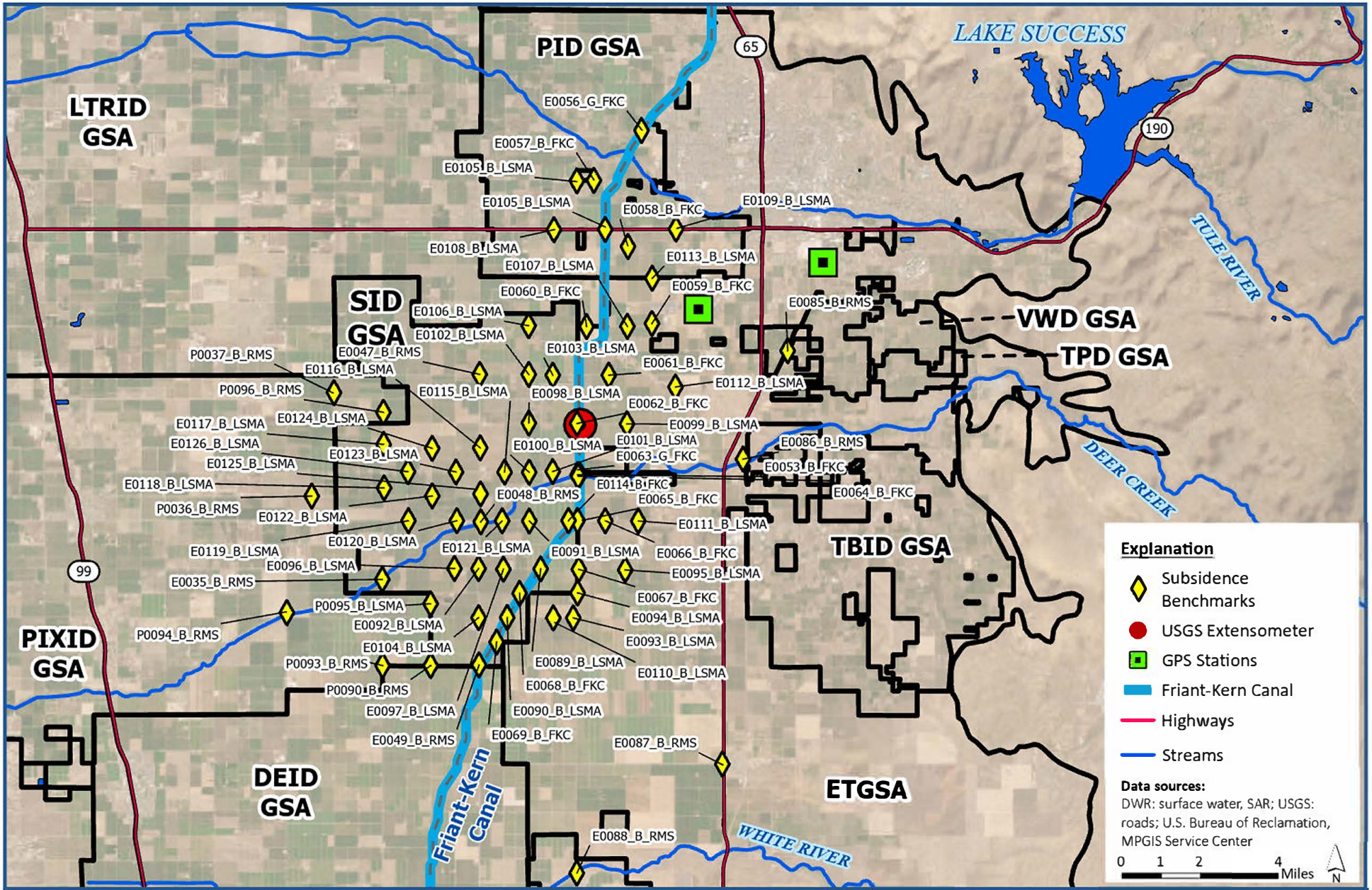


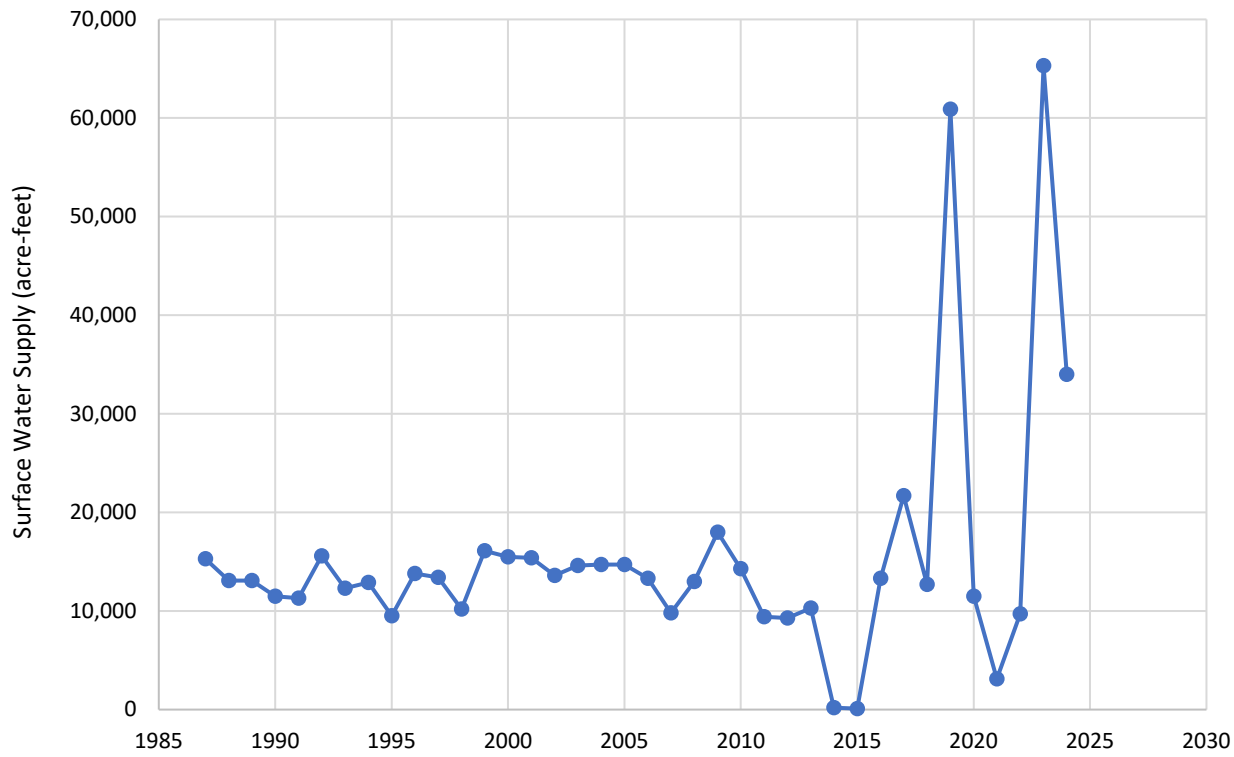
Notes:

Tre Altamira InSAR Vertical Displacement data from California Department of Water Resources (DWR).
<https://gis.water.ca.gov/arcgisimg/rest/services/SAR>

- = C- C' Profile Line (Inset Map)
- - - = Inferred data (Profile)



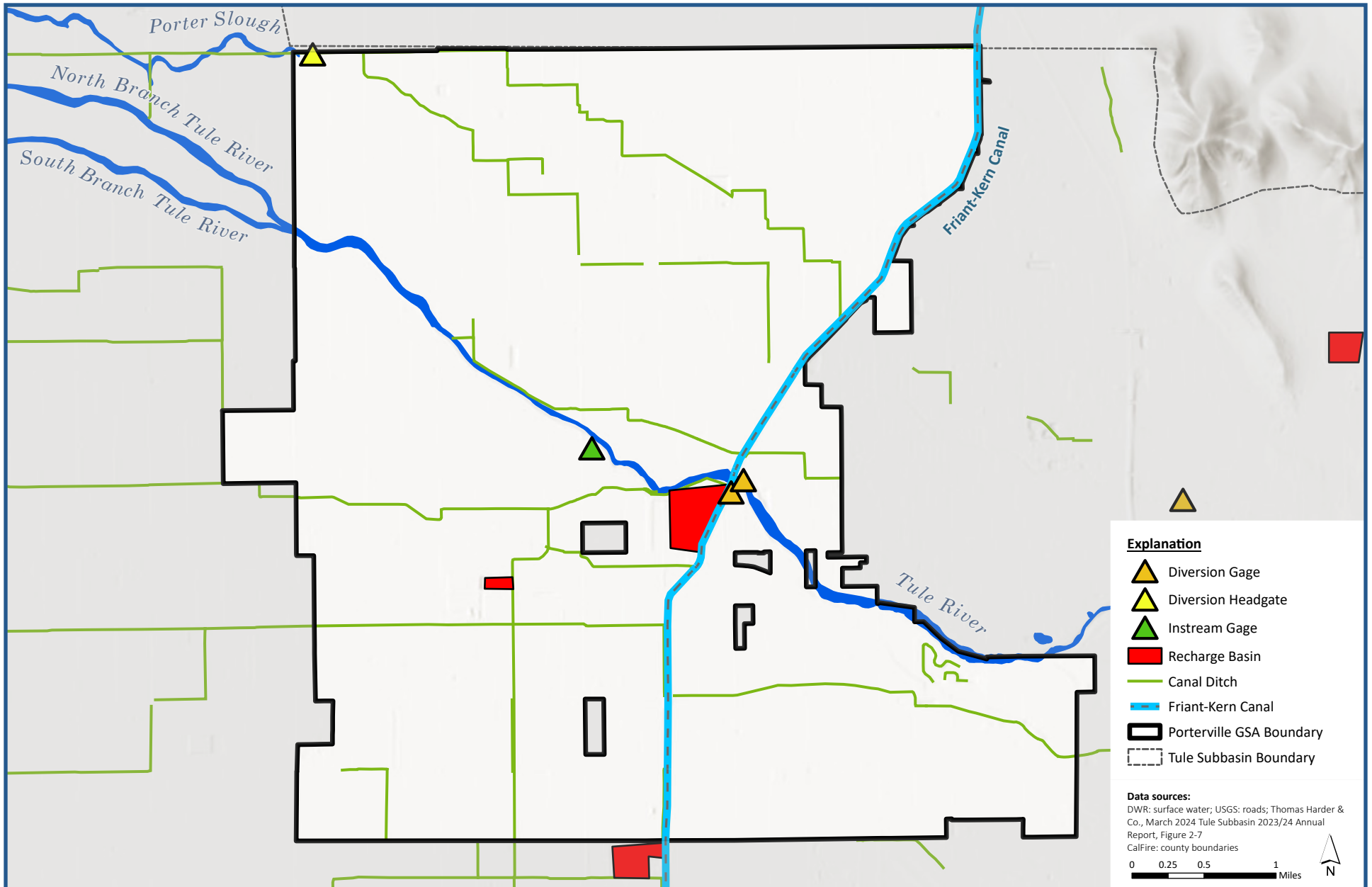


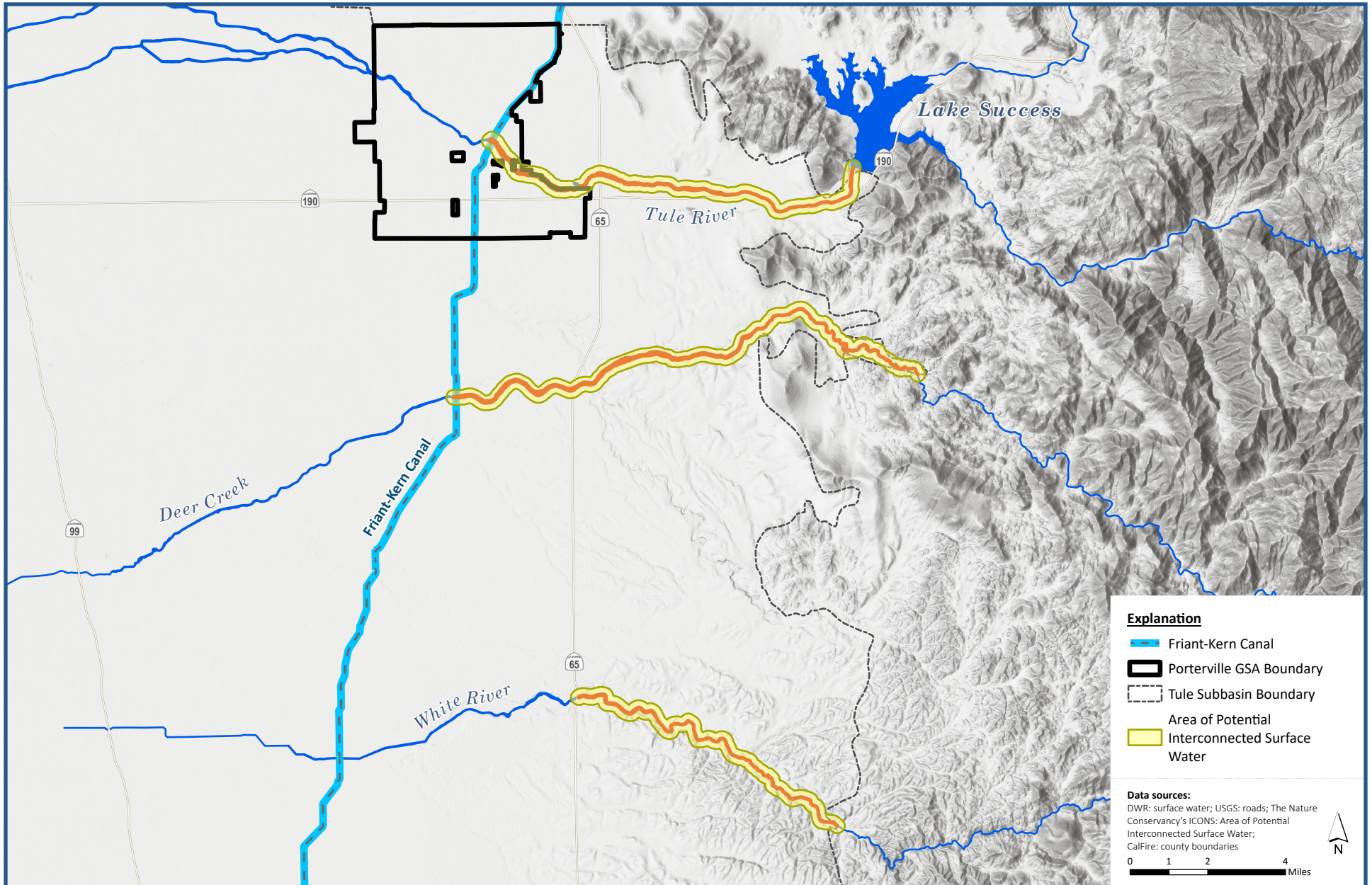


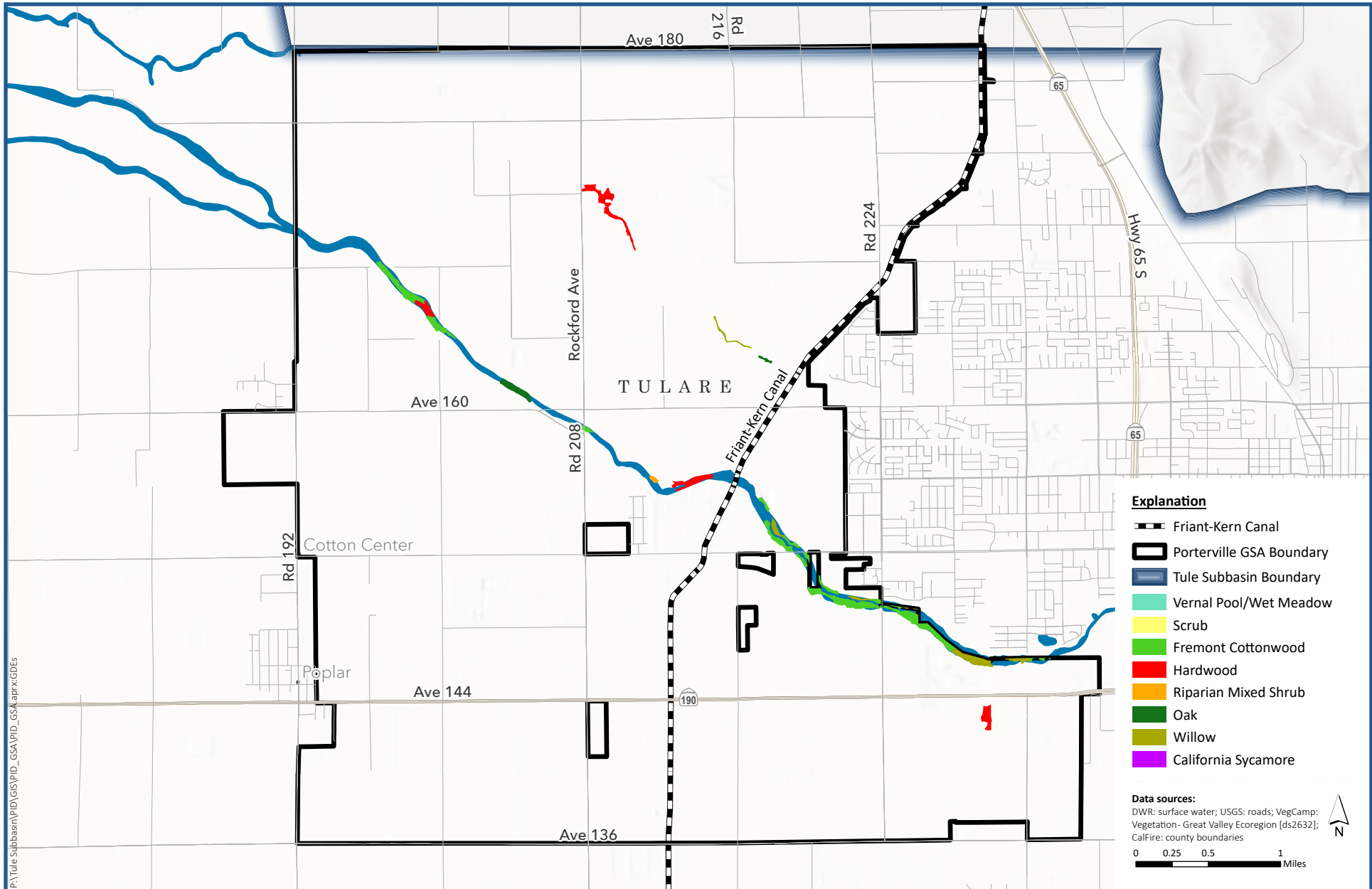
PID Historical Surface Water Supply

*Groundwater Sustainability Plan
Porterville Irrigation District GSA, tule Subbasin*

Figure 2-32







Potential Groundwater Dependent Ecosystems

Groundwater Sustainability Plan
 Porterville Irrigation District GSA, Tule Subbasin

Figure 2-35

