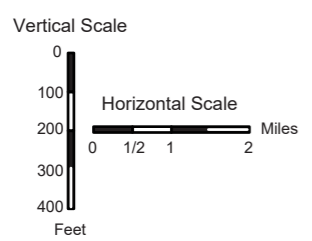
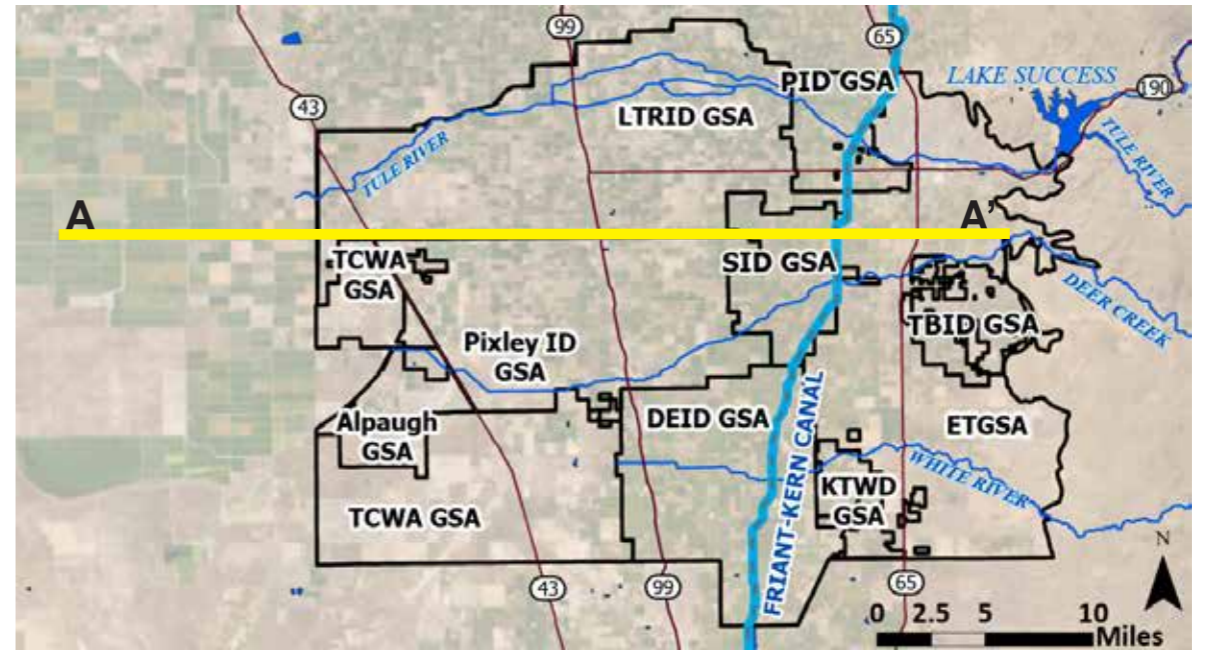


Notes: Modified cross-section from Thomas Harder & Co. (2024)  
 Lithologic data from Department of Water Resources Well Completion Reports.  
 Wells are located within one half mile from A-A' line.  
 \*TBID GSA boundaries are located within 2 miles south of the A-A' cross-section line.  
 Corcoran Clay from USGS Professional Paper 1766,  
[http://water.usgs.gov/GIS/dsdl/pp1766\\_CorcoranClay.zip](http://water.usgs.gov/GIS/dsdl/pp1766_CorcoranClay.zip)  
 Brackish Water Interface based on Planert and Williams, 1995 and Page,  
 1973 USGS Atlas HA-489

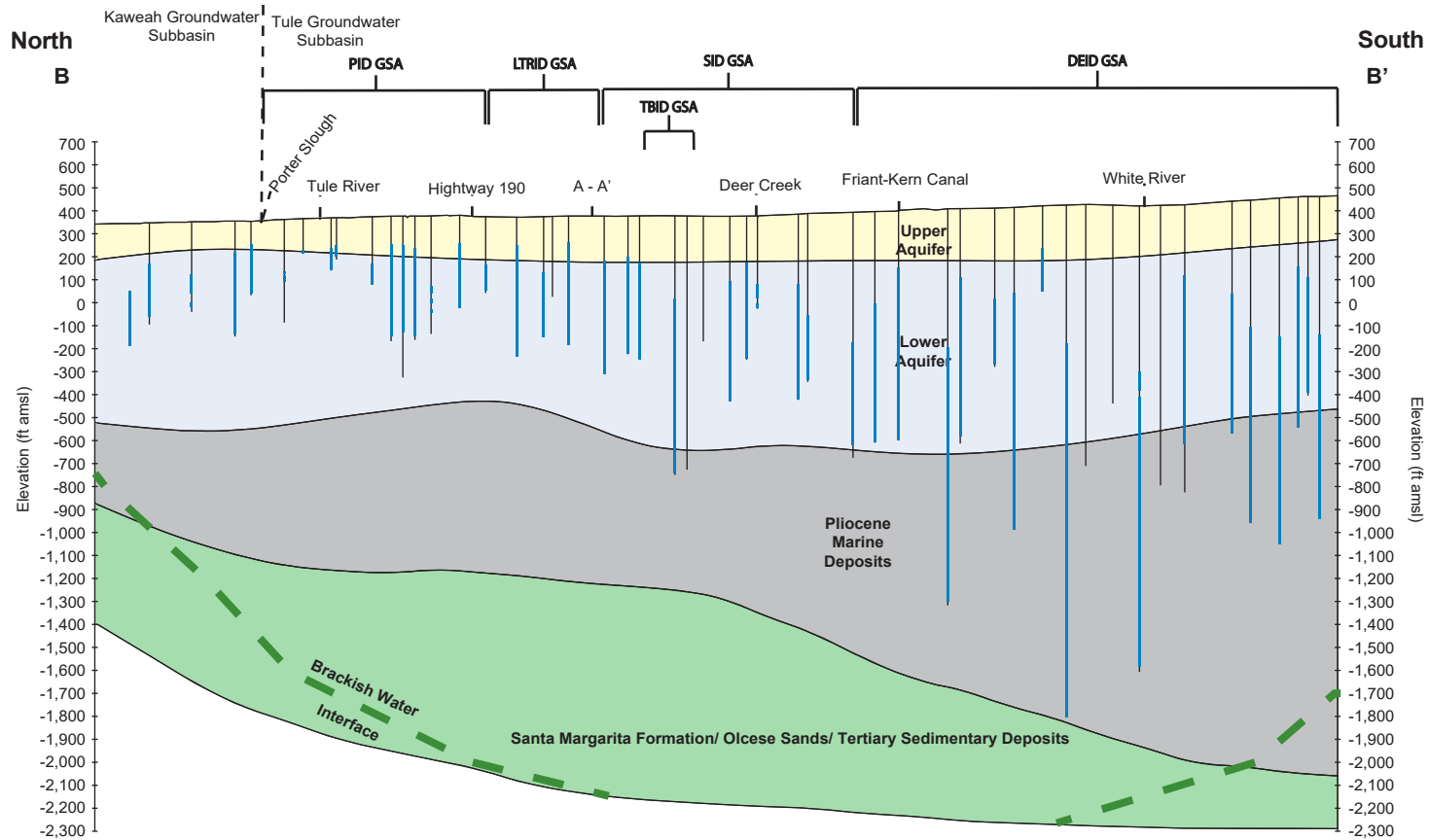


- | = Well perforation interval
- = A - A' cross-section line
- Fm = Formation



**Geologic Cross-Section: A-A'**  
 Groundwater Sustainability Plan  
 Porterville Irrigation District GSA, Tule Subbasin

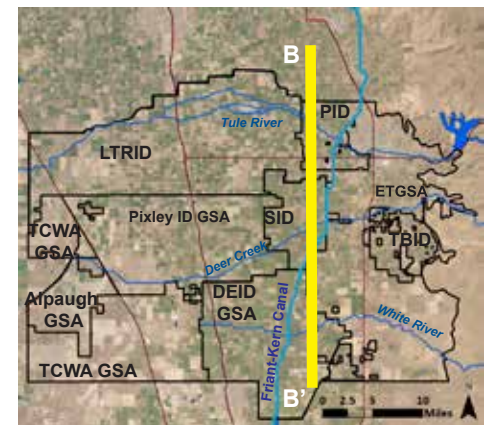
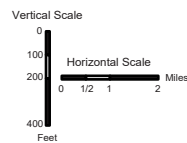
Figure 2-11



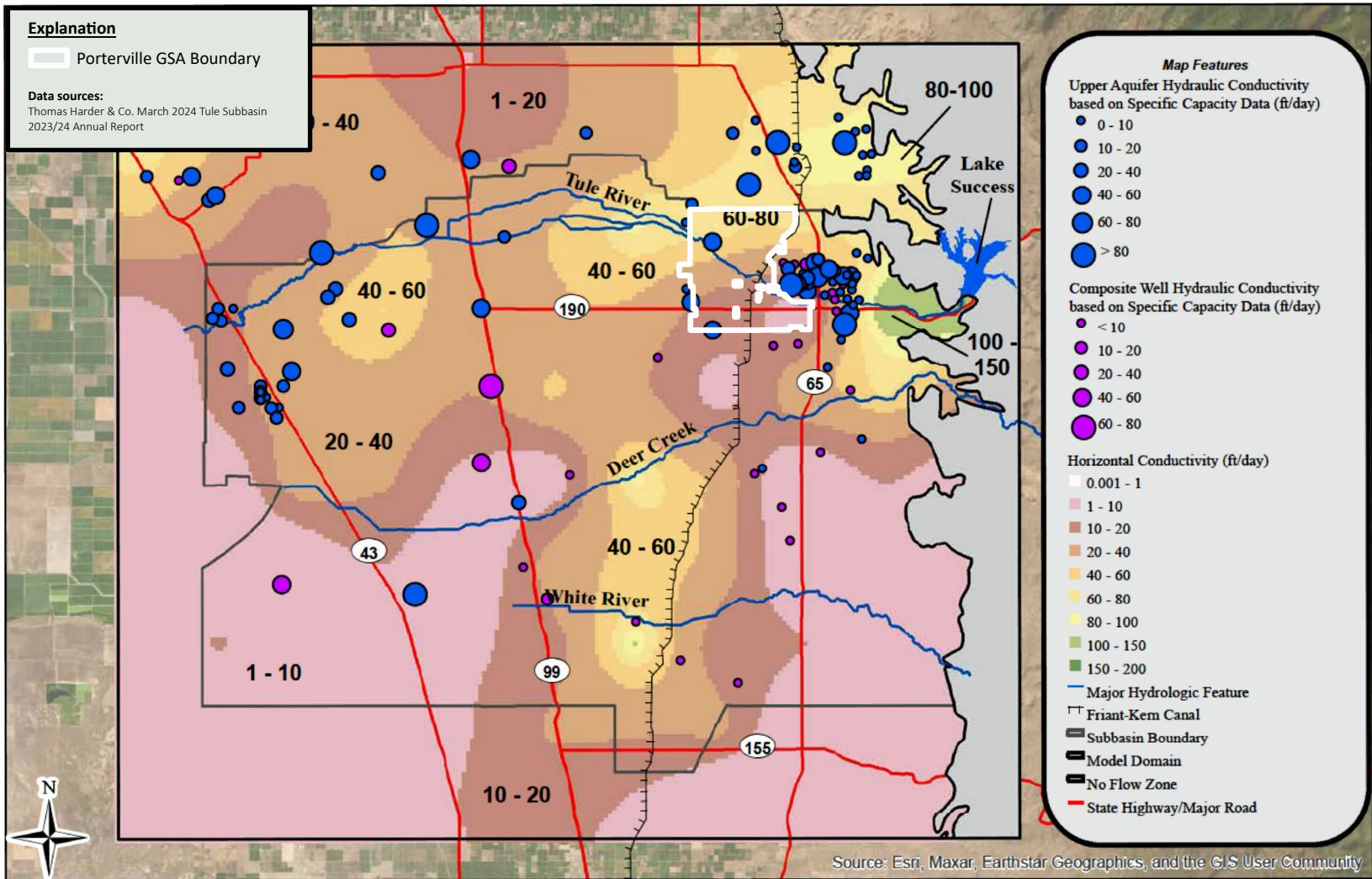
Notes: Modified cross-section from Thomas Harder & Co. (2024)  
 Lithologic data from Department of Water Resources Well Completion Reports.  
 Wells are located within one half mile of cross-section line.  
 Corcoran Clay from USGS Professional Paper 1766,  
[http://water.usgs.gov/GIS/dsd/pp1766\\_CorcoranClay.zip](http://water.usgs.gov/GIS/dsd/pp1766_CorcoranClay.zip)

Brackish Water Interface based on Planert and Williams, 1995 and Page,  
 1973 USGS Atlas HA-489

- | = Well perforation interval
- = B - B' cross-section line
- Fm = Formation



**Tule Subbasin Technical Advisory Committee  
2023/2024 Annual Report**



**Thomas Harder & Co.**  
Groundwater Consulting



0 3 6 12  
Miles  
NAD 83 State Plane Zone 4

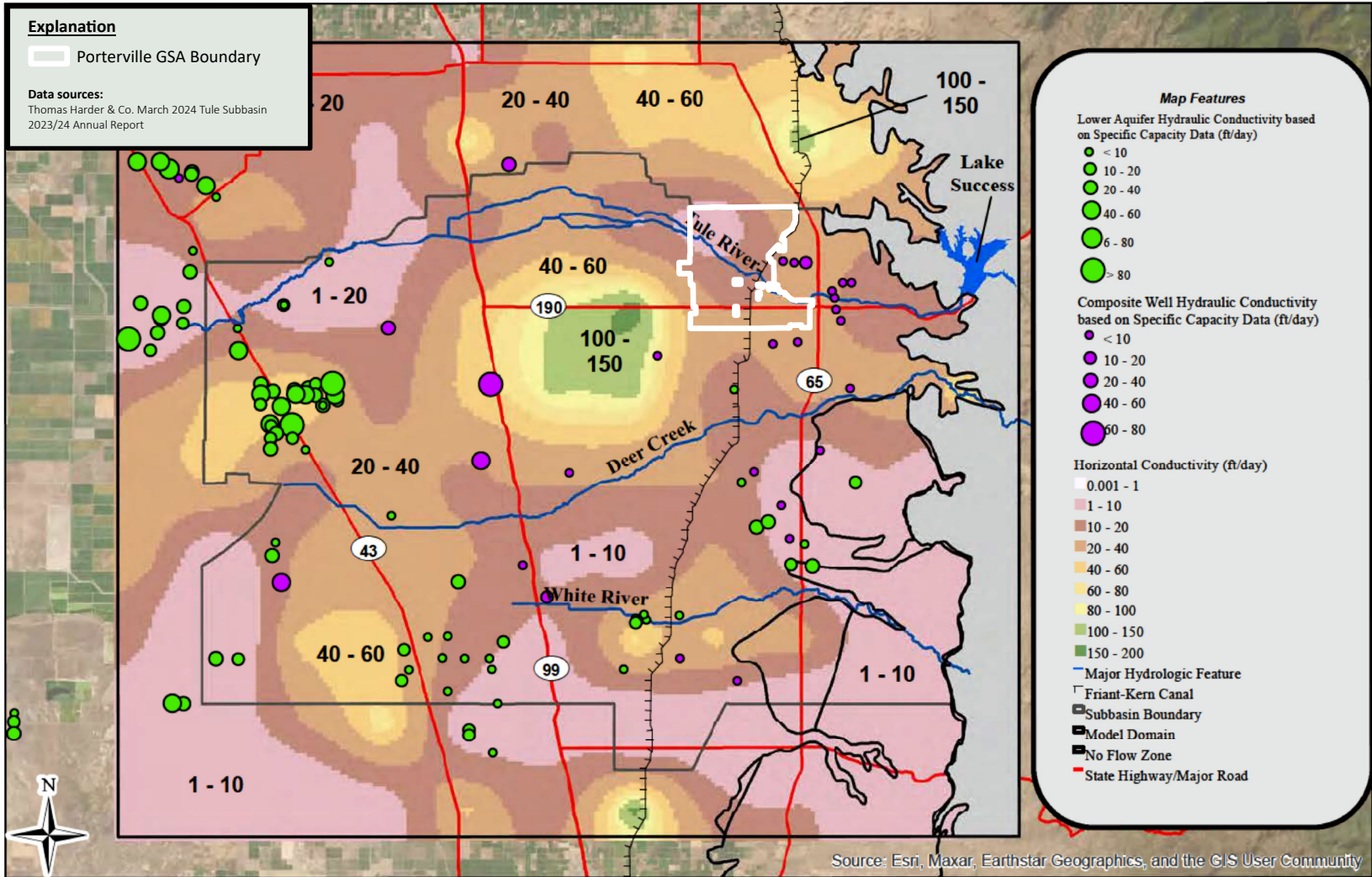


**Upper Aquifer Horizontal Hydraulic Conductivity**

Groundwater Sustainability Plan  
Porterville Irrigation District GSA, Tule Subbasin

Figure 2-13

**Tule Subbasin Technical Advisory Committee  
2023/2024 Annual Report**



**Thomas Harder & Co.**  
Groundwater Consulting



0 2.5 5 10  
Miles  
NAD 83 State Plane Zone 4

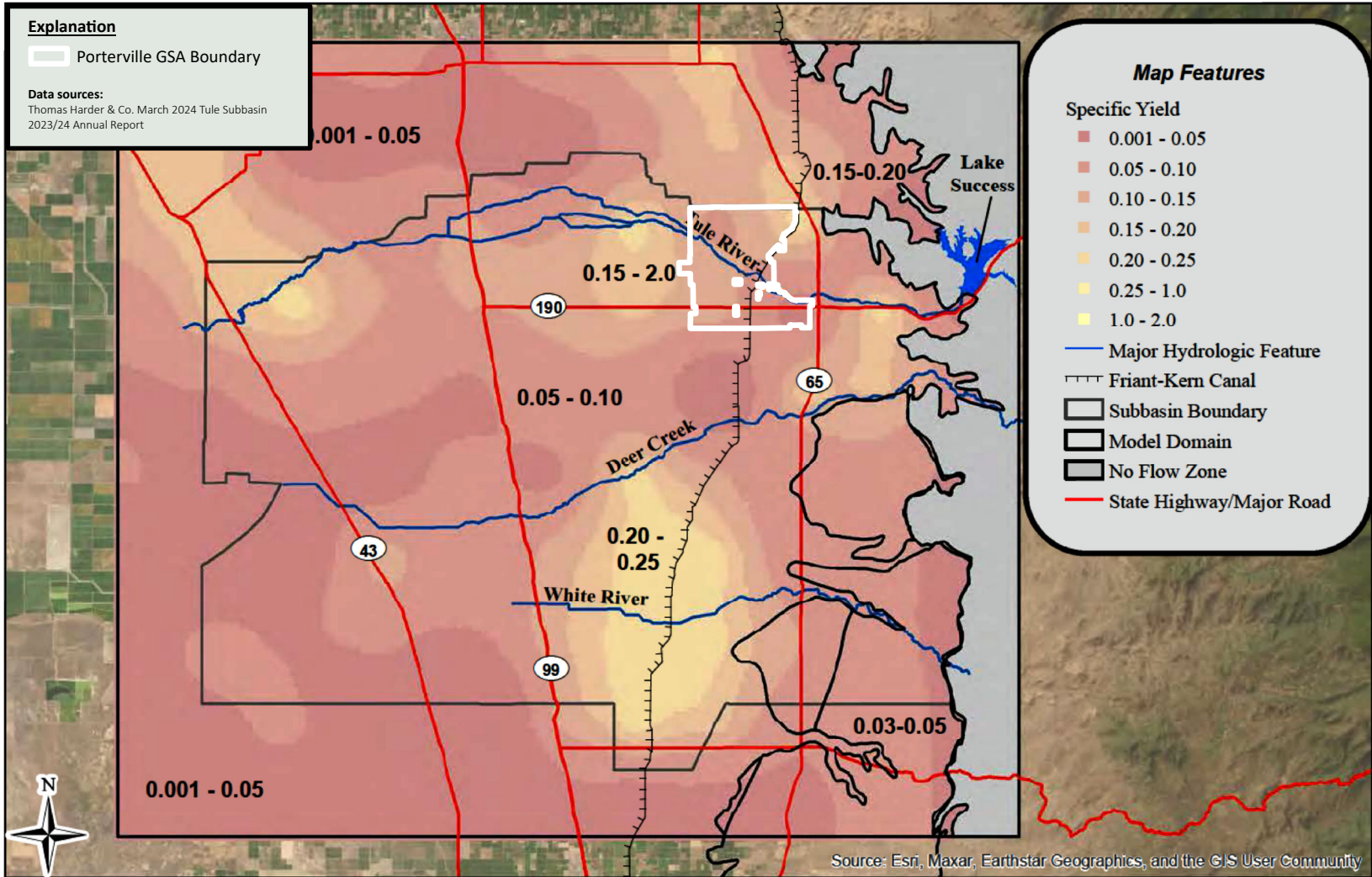


**Lower Aquifer Horizontal Hydraulic Conductivity**

Groundwater Sustainability Plan  
Porterville Irrigation District GSA, Tule Subbasin

Figure 2-14

**Tule Subbasin Technical Advisory Committee  
2023/2024 Annual Report**



**Thomas Harder & Co.**  
Groundwater Consulting



0 3 6 12  
Miles  
NAD 83 State Plane Zone 4

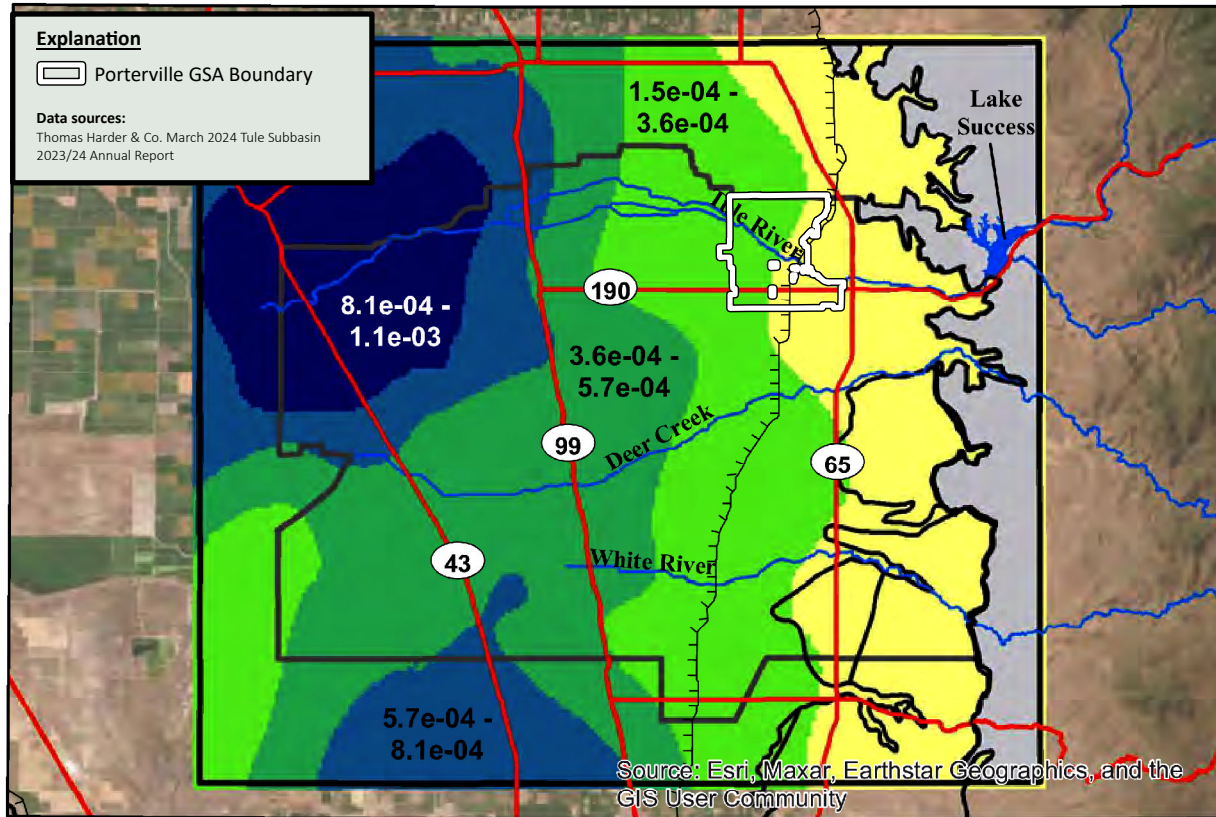


**Lower Aquifer Horizontal Hydraulic Conductivity**

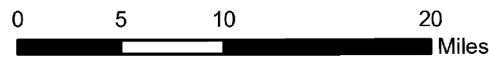
Groundwater Sustainability Plan  
Porterville Irrigation District GSA, Tule Subbasin

Figure 2-15

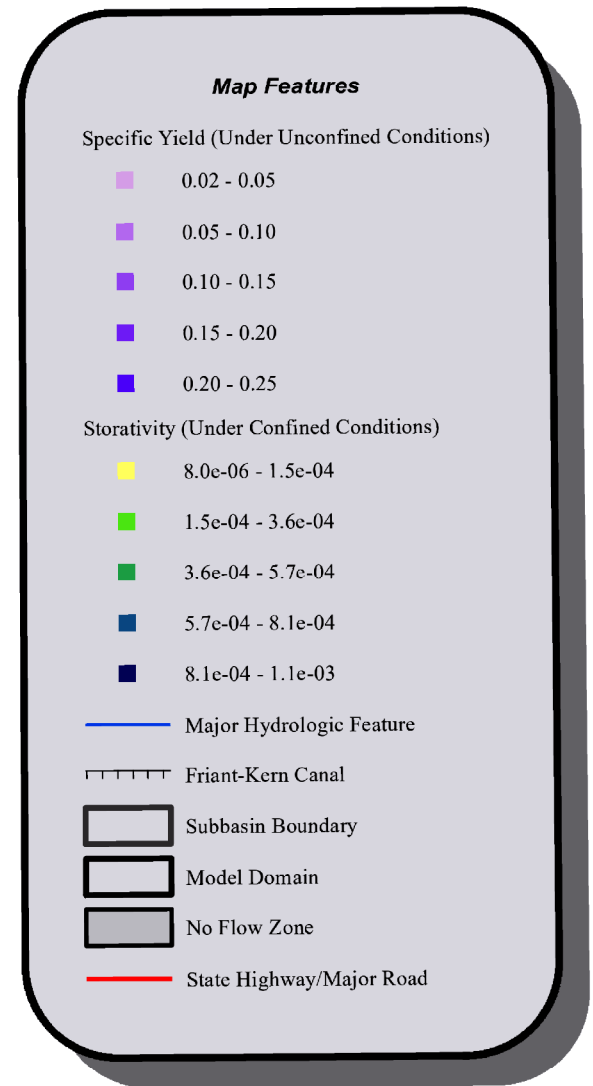
Tule Subbasin Technical Advisory Committee  
2023/2024 Annual Report



**Thomas Harder & Co.**  
Groundwater Consulting



NAD 83 State Plane Zone 4



**Lower Aquifer Storage Properties: Storativity**

Groundwater Sustainability Plan  
Porterville Irrigation District GSA, Tule Subbasin

Figure 2-16b

